

# *Drywall, Ceiling & Framing Contractors*



[pinnacleinfotech.com](https://pinnacleinfotech.com)



**Pinnacle  
Infotech**

Construct  
Certainty, with  
Technology

# Mission

Help the AEC industry optimize resources, cost and quality through innovative use of technology for:

- Sustainable and efficient design
- Collaborative pre-construction planning
- Agile construction process
- Reliable facility management

# Vision

Lead the global AEC industry to certainty and efficiency using technology.

## Associations:



# Our Values

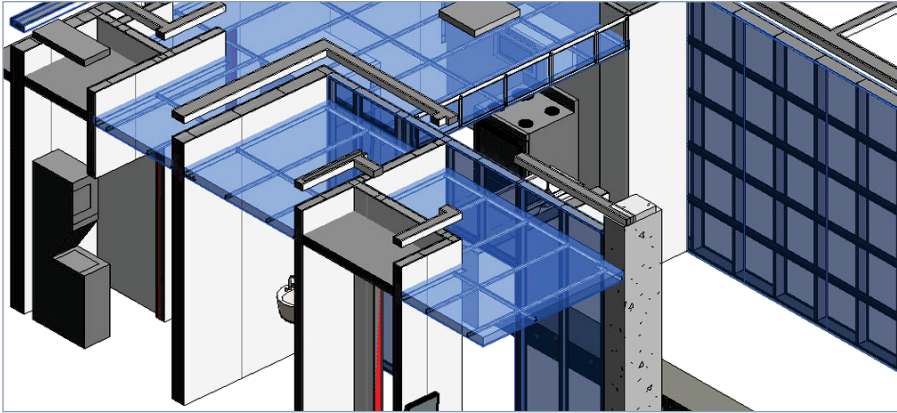
- E Excellence**  
We take pride in our passion for excellence. It is a way of life for us.
- A Agility**  
We are always at the edge of technology and driven by agile transformations.
- R Reliability**  
We have ISO-certified processes and workflow to produce consistent and reliable performance.
- T Teamwork**  
Pinnacle provides an environment where teams collaborate effectively to excel.
- H Honesty**  
We win the trust of our stakeholders through integrity, straightforwardness, and transparency.

# Index

1. Revolutionizing Drywall, Ceiling & Framing segment of AEC industry	Page 04
2. Why BIM for Drywall, Ceiling & Framing Contractors?	Page 04
3. BIM Services for Drywall, Ceiling & Framing Contractors	Page 04
4. Drawings by Pinnacle to help contractors at coordination phase	Page 06
5. Model-based Quantity Take-off and Estimation	Page 07
6. Full services offered for Drywall, Ceiling & Framing Contractors	Page 07
7. BIM for Drywall, Ceiling & Framing contractors: Workflow	Page 07
8. LOD Matrix for 3D Model (Drywall, Ceiling & Framing Contractor)	Page 07
9. Why Pinnacle	Page 08
10. Our Team	Page 08
11. Our Infrastructure	Page 09
12. Our Work Processes	Page 09
13. Our Projects	Page 10
14. Clients Speak	Page 11



## 1. Revolutionizing Drywall & Framing Segment of AEC Industry



*Drywall & Framing Model*

Time and cost are the major key factors that have a great influence in all AEC Ventures. Be it any segment or any stakeholder of an AEC Project, major strive stays focused on cost and time management. BIM, with its revolutionary standards and potential to facilitate the construction process, has lots of privileges from Drywall and Framing Contractors.

Pinnacle Infotech, with its long years of presence in the industry, has helped the AEC professionals of all segments by accurate and task-oriented implementation of BIM. Pinnacle offers BIM services for drywall contractors modeling with constructability review, clash coordination, shop drawings, quantity take-off, and virtual mock-ups. Our industry experts automate metal stud placement and eliminate the laborious process of manual placement of metal studs. We are conversant with all prevalent international software applications like Autodesk Revit.

Pinnacle Infotech has been acknowledged as the global leader in providing innovative BIM solutions. Various awards and recognitions from corporate and government levels certify our experience and expertise in project management and service deliverance. Our process orientation and quality control are per ISO standards – 9001:2015, 27001:2013, 19650-2, 19650-3, and 19650-5, plus EMS 14001:2015. As holders of **ISO 19650-5**, the esteemed international certification for BIM services, we ensure adept data management and transparent collaboration.

With 30+ years of global service in 43+ countries, Pinnacle boasts a robust portfolio of 15,000+ successful projects, granting unmatched expertise in international building codes and procedures. Our global delivery system ensures constant client contact, erasing geographic barriers.

## 2. Why BIM for Drywall, Ceiling & Framing Contractors?

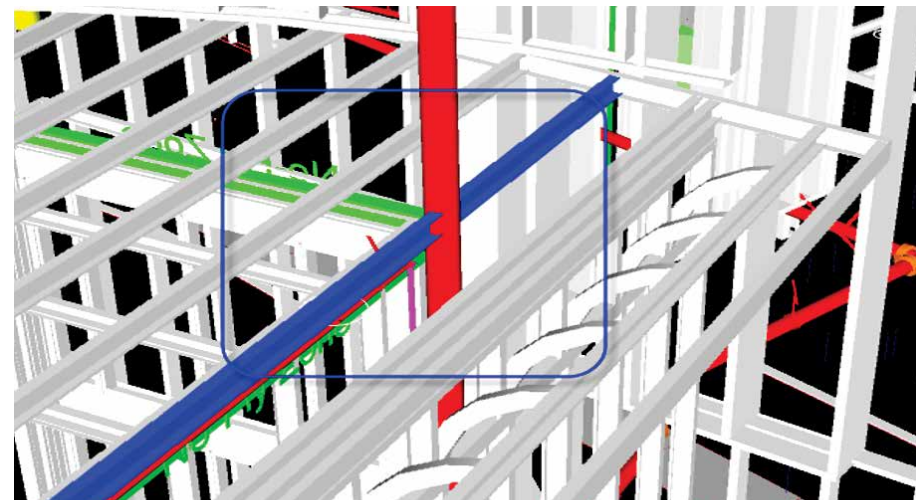
A BIM add-on for interior framing lets building professionals look at a BIM object or wall type and quickly understand the wall's construction, fire and sound requirements, limiting heights and design.

Building information modeling is changing the way buildings are designed and constructed. It facilitates two-way collaboration and communication between architects and the trades, resolving details and potential conflicts before the concrete slab is poured. It also requires that you change your work processes. BIM is like a train hurtling down the tracks-you can stand aside and watch it pass or treat it as a ticket to new business opportunities.

## 3. BIM Services for Drywall, Ceiling & Framing Contractors

### 3.1 3D BIM Modelling with Constructability Review

The basic aim of 3D BIM Modelling Constructability analysis is to review construction processes/methods during the design phase and identify potential obstacles and design flaws that might result in schedule delays, cost overruns, rework, etc.

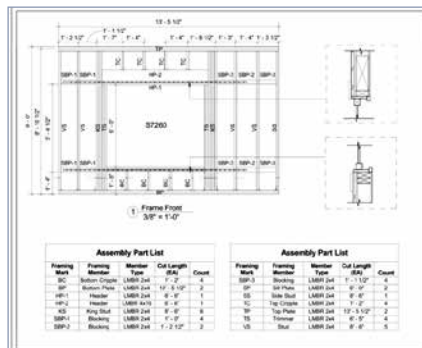


*3D BIM Modelling with Constructability Review*

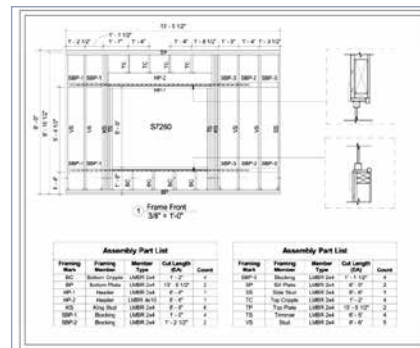


## 3.2 2D Shop Drawing

Shop drawings are typically a set of drawings required for prefabricated components and include dimensions, manufacturing standards and fabrication details. Architectural building information modeling (BIM) has its roots in conventional 2D shop drawing. Coordinated shop drawing is a combined 3D rendering of the construction project by integrating all architectural, structural and trades shop drawings. A drawing or a set of drawings, which are required for prefabricated components like trusses, elevators, structural steel, windows, cabinets, appliances, mill-work and air handling units and produced by the contractor, supplier, manufacturer, fabricator or sub-contractors, are called shop drawings.



Shop Drawing – Exterior Wall Framing



Shop Drawing – Exterior Wall Framing

## 3.3 Clash Coordination

BIM Model is prepared in different dimensions to individually deal with the geographical representation of the model and to see how it will look when constructed. It is also to flesh out any faults in the design so that the project comes out accurate and as expected.

BIM coordinated and collaborated with architectural, structural and MEP engineering disciplines can streamline the design process, identify clashes and resolve them during the design stage. It has proved to provide many benefits to construction projects and hence is being used by more and more architects and engineers.

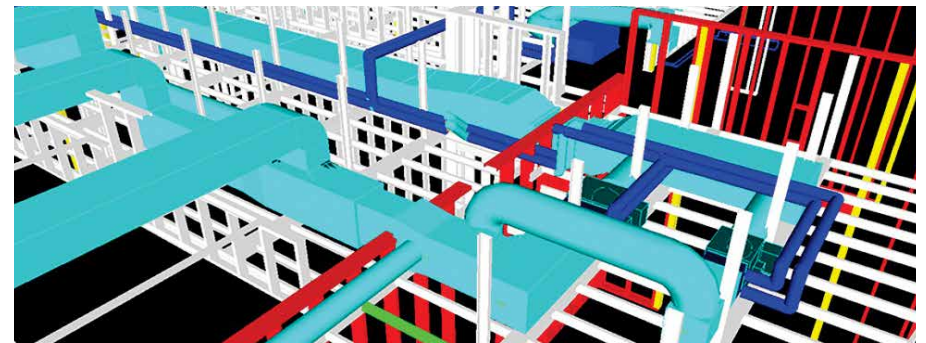
	FP VS ARCH (L200 & L250)_21	O-7 : Street Level	x:2801.064, y:360.959, z:355.112	#21- 2018/3/14 11:57.02 FP pipes clashing with WALL
	FP VS ARCH (L200 & L250)_22	G-2 : Street Level	x:1089.155, y:-148.677, z:318.344	#22- 2018/3/14 11:53.47 FP pipes clashing with WALL
	FP VS ARCH (L200 & L250)_25	A-7 : Street Level	x:363.360, y:943.179, z:414.180	#25- 2018/3/14 09:44.05 FP clashing with wall

Clash Coordination

## 3.4 Coordinated Drawings

BIM Coordination Drawing Services by Pinnacle forms the backbone for most implementation in BIM related projects. While BIM Coordination Drawing Process includes Clash Detection reports, constructability reviews and virtual mock ups or personal coordinated meetings with construction professionals, it enhances the operability and purpose of BIM software to ensure that the project is not delayed or incurs unnecessary costs for the team and clients.

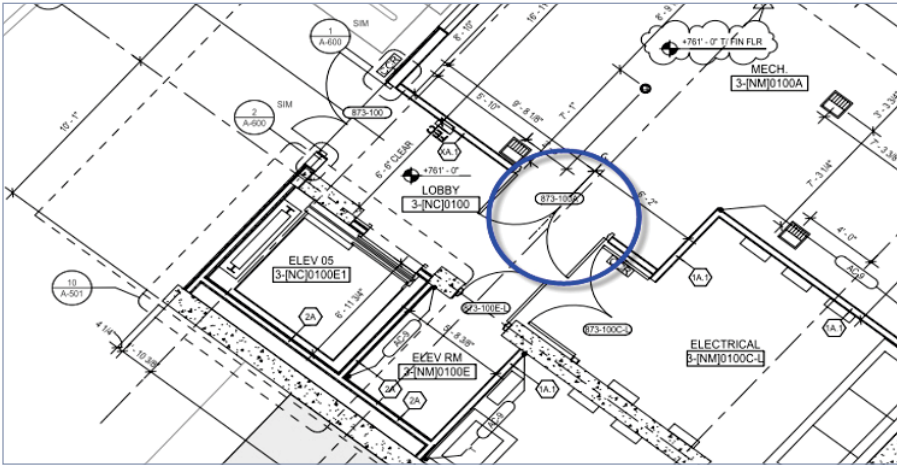
It ensures coordination drawing is done prior to installation to minimize design changes. It identifies constructability issues in the pre-design stages to avoid errors in design, reduce clashes and improve coordination among architectural, structural and MEP disciplines. It aids in reducing wastage, conflicts, and installation issues. Design drawings are converted into virtual 3D Models for geometry representation where all the models are then created in Revit or Navisworks to detect errors, interference's or collisions, etc.



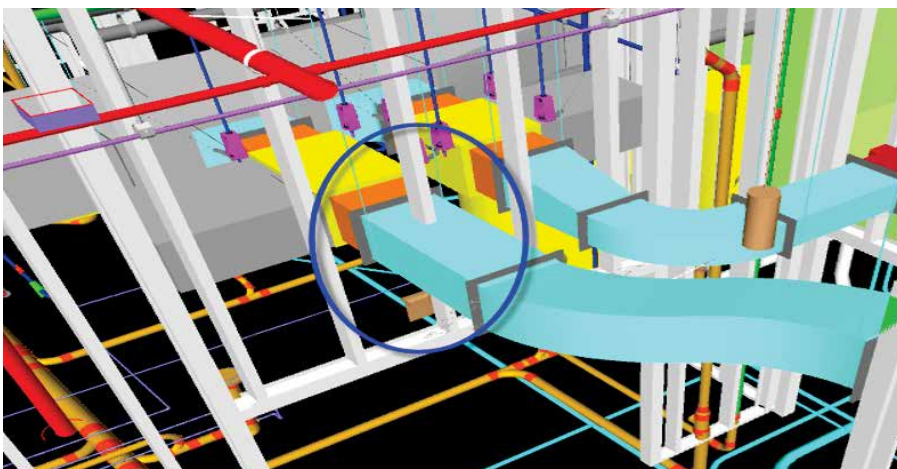
Coordinated Model of Stud Framing & Mechanical

### 3.5 Design Validation or Design Assistance

When looking for Engineering design validation and Engineering design assistance services, Pinnacle delivers the highest quality services. Our expert team of design engineers will help you produce with higher quality 3D modeling, analysis & assistance. Design validation and assistance helps in uncovering the design flaws, performance risk and improves the overall product effectiveness. This feature reduces cost and time for construction and improves the constructability and adds value to the entire project management procedure.



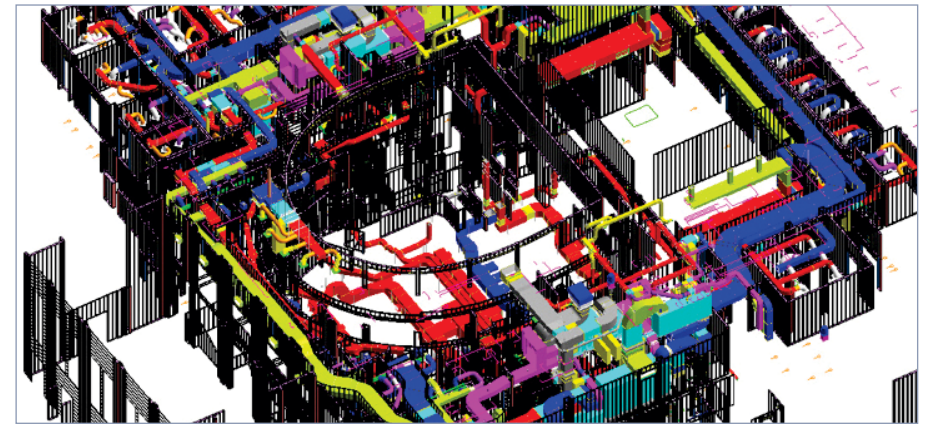
*Input received*



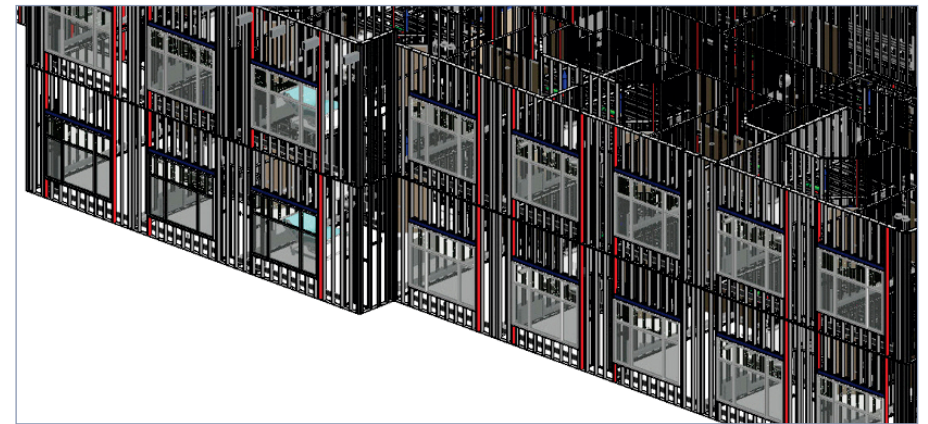
*Duct is clashing with wall stud (3D Model in Navis)*

## 4. Drawings by Pinnacle to help contractors at coordination phase

- Color-coded members to differentiate priority walls, posts, opening framing & other members
- Dimensions relevant to framing placement
- Configuration of full-height walls at doors, handrails & corners
- Mechanical systems in conflict with walls
- Details of bracing rated lid & partial height walls to nearby walls
- Wall drawings with elevations, type identifiers & lateral dimensions for backing plates & openings



*Wall Framing coordinated with Mechanical trade*



*Colour Coding for Critical Stud Elements*



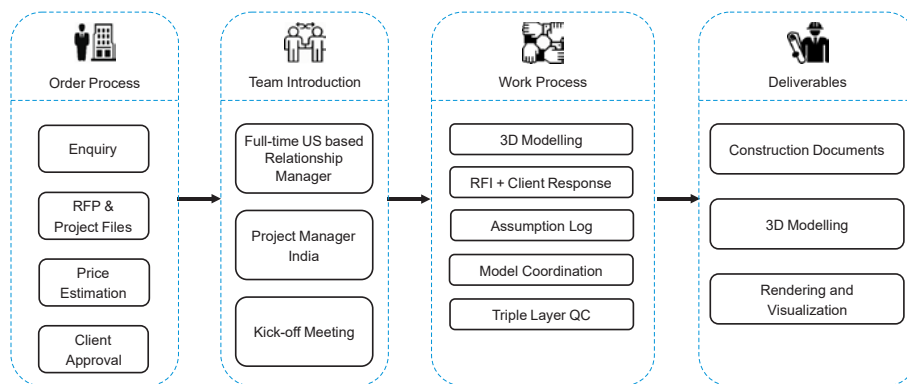
## 5. Model based Quantity Take-off and Estimation

The feature of model-based quantity takeoff & estimation function of BIM holds the roots to significant automation and innovation in the building construction industry. Model-based quantity takeoff & estimation connects a 3D object, its parts and the entire assembly model to the external third party cost estimating software. Whenever a change in the design geometry or quantity is changed, the changes are automatically reflected in the costs.

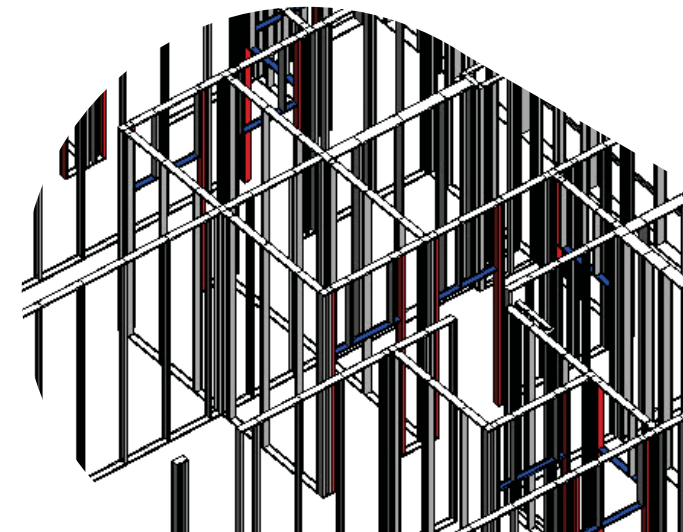
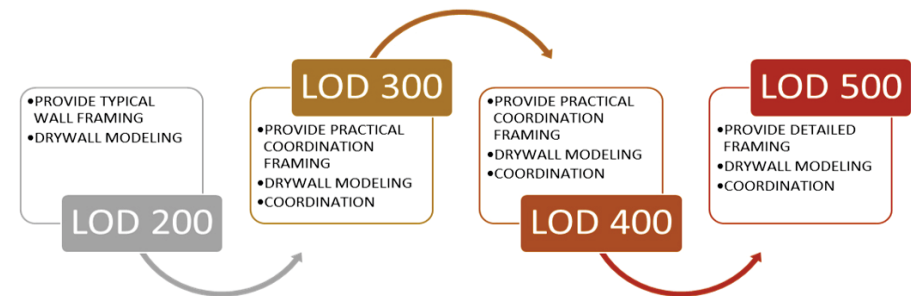
## 6. Full services offered for Drywall, Ceiling & Framing Contractors

- Interior and exterior Metal and Wood Framed walls
- Interior ceilings, furrdowns, and exterior soffits
- Acoustical lay-in ceiling grids modeled in 3D for overhead MEP coordination
- Interior and exterior curtain wall and storefront
- King studs for MEP coordination
- Metal stud kickers above ceilings to aid in overhead coordination
- Shop drawings
- Metal stud wall blocking modeling and shop drawings
- Security ceilings, canopy and cloud ceilings

## 7. BIM for Drywall, Ceiling & Framing contractors: Workflow



## 8. LOD Matrix for 3D Model (Drywall, Ceiling & Framing Contractor)



## 9. Why Pinnacle

Each of our employees has ingrained in themselves the core values - 'EARTH' of our organization.



Excellence



Agility



Reliability



Teamwork



Honesty

### *Excellence*

Excellence is a way of life for us. Our commitment to hard work, creativity, and innovation allows us to reach our full potential in approach, operations, and collaborations. We foster a culture of excellence from the ground up within our organization to achieve operation at the highest industry standards.

### *Agility*

We understand that every business is different. We are highly agile and can adjust quickly to changing market conditions and client requirements. In addition, we offer a variety of business models to suit your specific needs at competitive prices.

### *Reliability*

Pinnacalites rely on trusted processes to consistently produce excellent results. We have over 30 years of experience in the AEC industry, and our work processes are ISO-certified.

### *Teamwork*

We work together to scale every challenge. We understand that it is only through teamwork that we can provide the best possible results for our customers. Pinnacle fosters a team-oriented culture where everyone is valued, and their contributions are encouraged and recognized.

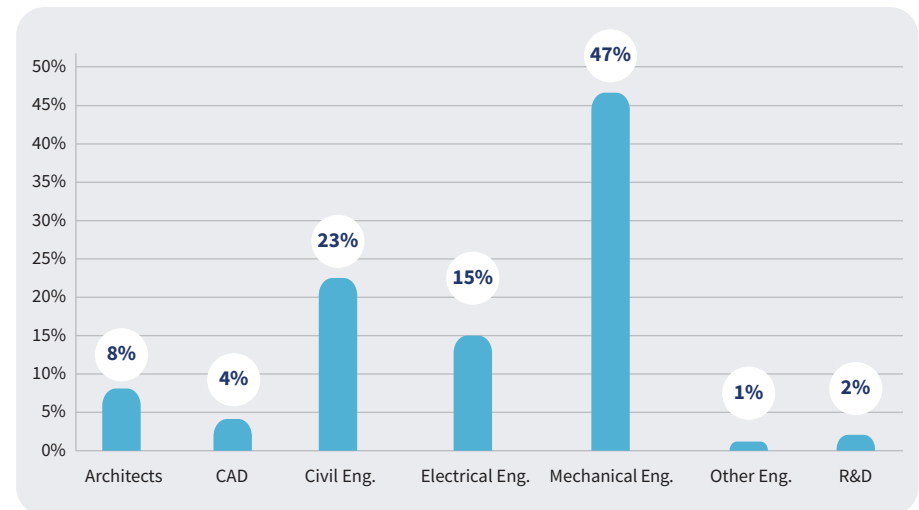
### *Honesty*

Honesty is our key value, and we hold ourselves to the highest standards of integrity. We strive to be transparent and clear in our communication to ensure that our clients get the best value for the money.

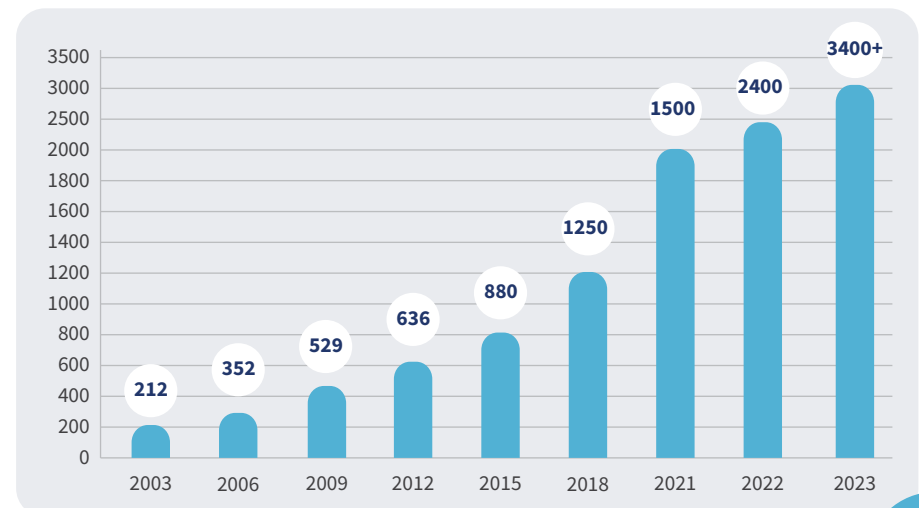
## 10. Our Team

Pinnacle's significant contribution to Building Information Modeling is made possible by its highly qualified and experienced workforce, including engineers, architects, and other experienced professionals. All our employees are well-versed in handling international construction codes and standards. We are proud of the diverse team and their global experience.

### *Employee Background*



### *Workforce Growth*





## 11. Our Infrastructure

Pinnacle has large state-of-art campuses in Durgapur, Jaipur, Kolkata & Madurai, comprising facilities like High-speed Bandwidth, Blade servers, an R&D center, a Datacenter, recreational zones, playgrounds, and more.

We also have equipped global delivery centers in the US (Houston and Atlanta), Canada (Toronto), UK (London), UAE (Dubai), Singapore, Germany (Munich), and Japan (Tokyo) that allow our employees to work in the same time zone as our customers.

Pinnacle's *Construct-ability Installation Lab* gives construction site experience to employees, integrating theoretical learning with practical experience. It enables our employees to deliver BIM solutions on time and with accuracy.



## 12. Our Work Processes

We strongly emphasize the significance of efficient work process management and consistent communication in the context of outsourcing services. Our process orientation and quality control are per ISO standards – 9001:2015, 27001:2013, 19650-2, 19650-3, and 19650-5, plus EMS 14001:2015. As holders of **ISO 19650-5**, the esteemed international certification for BIM services, we ensure adept data management and transparent collaboration. On orders, we assign a dedicated Relationship Manager, a competent Project Delivery Head, and Project Managers for focused execution.

### *Relationship Management*

Our relationship managers are co-located with customers, ensuring clear communication, managing timelines, and handling deliveries promptly to surpass customer expectations. They advise customers on the services Pinnacle provides and build long-term business relationships.

### *Production Process*

Project teams report to Project Delivery Head (PDH). The PDH provides technical leadership to the team and ensures standard work processes (as per ISO norms) are followed. They oversee project delivery. Project Delivery Heads periodically communicate with the client to get regular feedback and ensure the successful completion of the project.

Project Managers handle small teams for a customer and are responsible for understanding project requirements, project standards, invoicing processes, and communication protocols. They prepare project templates per project specifications, plan resources and align project delivery schedules.

### *Auditing Process*

The COE team is an independent body in the company for Process and quality management and monitors the process and quality through various audit parameters, sets up feedback management processes, carries out investigations in case of any complaints/concerns, and provides action items. This way, Pinnacle ensures consistency in the final deliverables throughout the company.

### *Quality Control Process*

Pinnacle's efficient processes and stringent quality control mechanisms have added certainty to 15000+ projects worldwide. Our process orientation and quality control are per ISO 9001:2015, ISO/IEC 27001:2013, ISO 19650-2, ISO 19650-3, and **ISO 19650-5** standards and are managed by an independent QC team.

## 13. Our Projects

### Children's Medical Center

*Plano, USA*



### MGM Springfield Resort

*Massachusetts, USA*



### SRM San Jose Assisted Living

*San Jose, USA*



### The Loft at Centennial Yards

*Atlanta, USA*



### Wichita Falls Memorial

*Dallas, USA*



### Wynn Convention Center

*Las Vegas, USA*



## 13. Clients Speak

“First time we are contractually required to provide BIM for our trade. And, to date, we are happy with our choice to work with Pinnacle.”

### **JD Traditional Industries, USA**

“Pinnacle has been a great company to work with, and they have helped me to create a functional model that aids in coordination efforts.”

### **The Altman Companies, USA**

“For the first time working with Pinnacle on a very complex project, it as went really well.”

### **Drake Interiors, USA**

“Greatly appreciate the timely submissions. Communication has been very clear, non-repetitive and prompt. Clarifying and examining the scope details prior to submissions has been good.”

### **IGS, USA**

“The Pinnacle team was very responsive and adapted to our local jurisdictions' standards very quickly. We look forward to working together again!”

### **JPC Group Inc., USA**

“Pinnacle has produced very detailed modeling in a timely manner that was faster than expected. They have also asked the right questions to provide a high-quality product that we at Columbia can use to our full advantage.”

### **Columbia Construction Company, USA**

“It was very nice to work with the pinnacle team. The team has a very good understanding of the project scope of work. Pinnacle submitted all deliverables within the scheduled time frame. We really appreciate the pinnacle team's effort and hard work.”

### **Nesma and Partners, KSA**

“Overall I am consistently happy with the work produced by Pinnacle Infotech. The work is thorough, adhere's to our company standards, is delivered in a timely fashion, and are willing to work with you to make sure their deliverable meets your needs.”

### **Kast Construction, USA**

“My company was very satisfied with Pinnacles performance on this project. Their project team was very helpful and got us everything we needed on time and maintained schedule. I will be utilizing their services again in the future.”

### **Kilgore Industries, USA**

It was good to work with Pinnacle on this project. The Pinnacle team was detailed, flexible, and responsive during the coordination process. Thank you!

### **Brasfield & Gorrie, USA**





## India Office Locations

### Durgapur - HQ

Pinnacle Infotech Solutions  
Bidhannagar, Durgapur, WB 713212  
Phone: +91 343 6602222  
Fax: +91 343 6602230  
Email: [info@pinnacleinfotech.com](mailto:info@pinnacleinfotech.com)

### Madurai

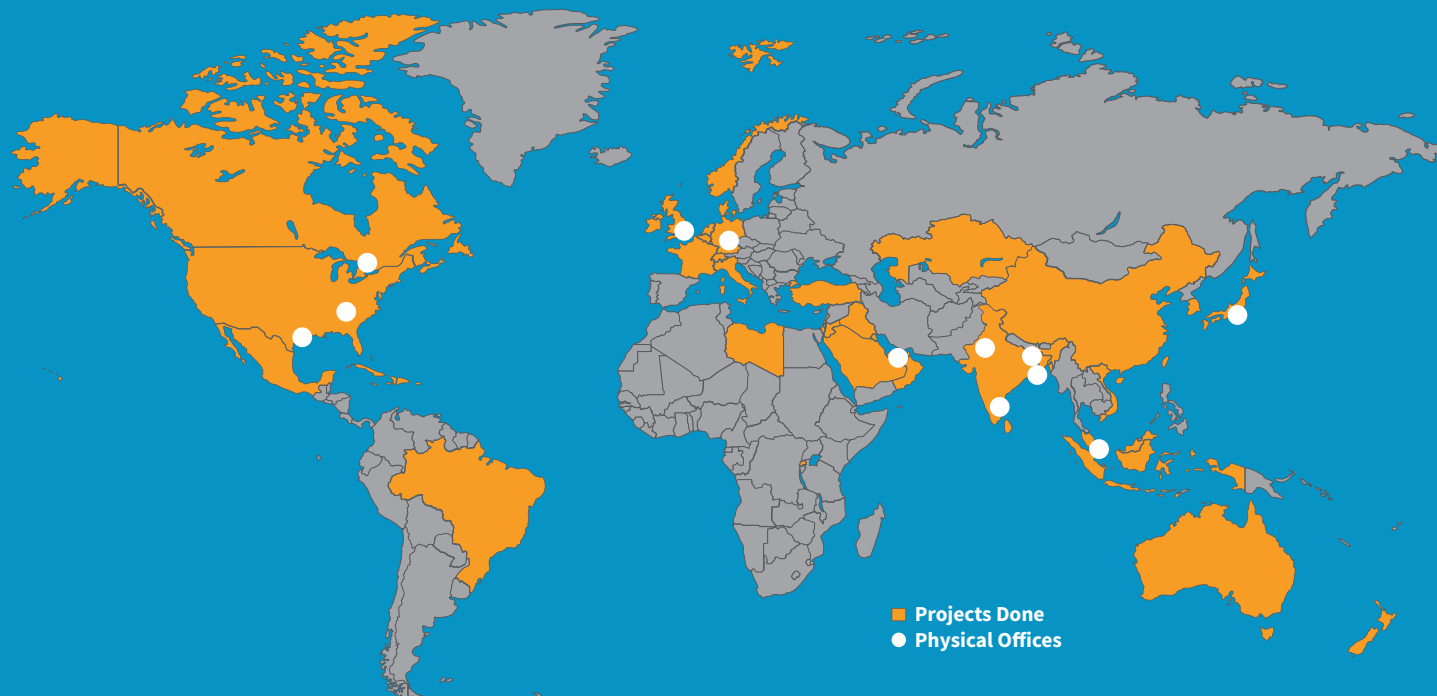
Pinnacle Infotech Solutions  
Elcot IT Park, Plot No - 5,6,&7, Vadapalanji,  
Madurai, Tamil Nadu, India - 625021  
Phone: +91 70100 97363

### Jaipur

Pinnacle Infotech Solutions  
Mahindra Sez, Jaipur, RJ 302037  
Phone: +91 141 722444

### Kolkata

Pinnacle Infotech Solutions  
Ecospace Business Park, Kolkata 700156  
Phone: +91 33 2324 5900



## International Office Locations

### USA - Houston

Pinnacle Infotech Inc.  
50 Sugar Creek Blvd,  
Sugar Land, TX 77478  
Mr. Biswanath Todi  
Phone: +1 713 780 2135  
Email: [btodi@pinnacleinfotech.com](mailto:btodi@pinnacleinfotech.com)

### USA - Atlanta

Pinnacle Infotech Inc.  
6065 Roswell Rd NE #625,  
Atlanta, GA 30328  
Mr. Mickey Cantrell  
Phone: +1 270 223 6319  
Email: [mcantrell@pinnacleinfotech.com](mailto:mcantrell@pinnacleinfotech.com)

### Canada

Pinnacle VDC Inc.  
3250 Bloor Street West, East Tower,  
Suite 600, Toronto, ON M8X2X9, Canada  
Mr. Cory Houle  
Phone: +1 613 290 7477  
Email: [choule@pinnacleinfotech.com](mailto:choule@pinnacleinfotech.com)

### UK

Pinnacle Infotech Limited  
The Barley Mow Centre,  
London, W4 4PH  
Mr. Pat Saha  
Phone: +44 79600 26070  
Email: [psaha@pinnacleinfotech.com](mailto:psaha@pinnacleinfotech.com)

### Germany

Pinnacle BIM Technology GmbH  
Lilienthalstrasse 27, 85399 Hallbergmoos,  
Munich, Germany  
Mr. Bernhard Kössler  
Phone: +41 79 4393570  
Email: [bkossler@pinnacleinfotech.com](mailto:bkossler@pinnacleinfotech.com)

### UAE

Pinnacle Infotech Technologies FZ-LLC  
Office No - 307, 3rd Floor, Building No. 7  
Dubai Outsource Zone, Dubai, UAE  
Mr. Yash Goyal  
Phone: +971 52 769 7465  
Email: [dubai@pinnacleinfotech.com](mailto:dubai@pinnacleinfotech.com)

### Singapore

Pinnacle BIM Technology PTE. LTD.  
BCA Braddell Campus, 200 Braddell Road,  
#13-63, Singapore 579700  
Mr. Kuntal Chakraborty  
Phone: +65 69508205  
Email: [kchakraborty@pinnacleinfotech.com](mailto:kchakraborty@pinnacleinfotech.com)

### Japan

Pinnacle BIM Technology K.K.  
#403 7-1-5, Minamiaoyama, Minato-ku,  
Tokyo, Japan, 107-0062  
Mr. So Adachi  
Phone: +81 80 3008 9453  
Email: [sadachi@pinnacleinfotech.com](mailto:sadachi@pinnacleinfotech.com)

