



# Home Builders



[pinnacleinfotech.com](https://pinnacleinfotech.com)



**Pinnacle  
Infotech**

Construct  
Certainty, with  
Technology

# Mission

Help the AEC industry optimize resources, cost and quality through innovative use of technology for:

- Sustainable and efficient design
- Collaborative pre-construction planning
- Agile construction process
- Reliable facility management

# Vision

Lead the global AEC industry to certainty and efficiency using technology.

## Associations:



# Our Values

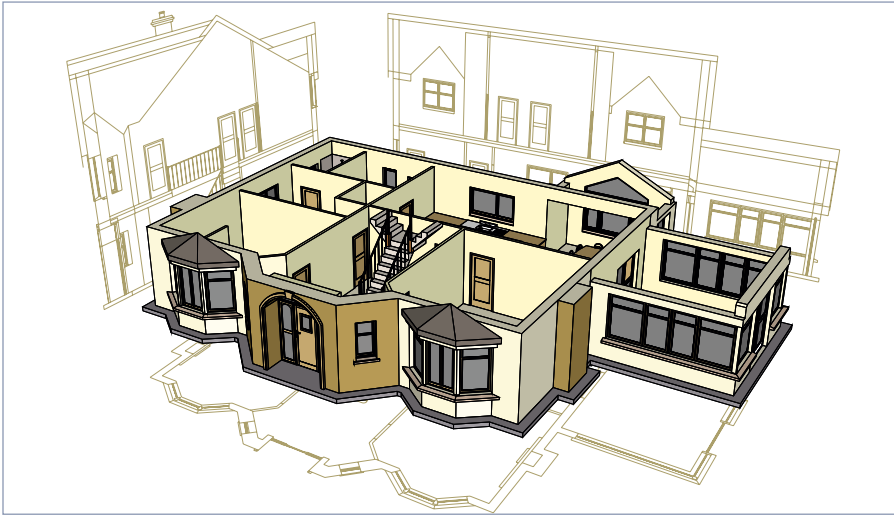
- E Excellence**  
We take pride in our passion for excellence. It is a way of life for us.
- A Agility**  
We are always at the edge of technology and driven by agile transformations.
- R Reliability**  
We have ISO-certified processes and workflow to produce consistent and reliable performance.
- T Teamwork**  
Pinnacle provides an environment where teams collaborate effectively to excel.
- H Honesty**  
We win the trust of our stakeholders through integrity, straightforwardness, and transparency.

# Index

1. Revolutionizing the AEC Industry	Page 04
2. Benefits of Building Information Modeling (BIM)	Page 04
3. Transition from 2D Platform to 3D Platform	Page 05
4. Creation of Various Design Options	Page 05
5. 3D Visualizations and Virtual Walkthroughs	Page 05
6. Construction Document Set	Page 05
6.1 Architecture	
6.2 Electrical	
6.3 HVAC	
6.4 Plumbing	
7. 3D Modeling for Rapid Prototype (3D Printers)	Page 07
8. Quantity Take-off	Page 07
9. LotSpec Add-in for Revit and AutoCAD Architecture	Page 07
10. Why Pinnacle?	Page 08
11. Our Team	Page 08
12. Our Infrastructure	Page 09
13. Our Work Processes	Page 09
14. Our Projects	Page 10
15. Clients Speak	Page 11



# 1. Revolutionizing the AEC Industry



Architectural BIM Model

Proper planning and coordination are the keys to the successful execution of projects in the construction industry. Advancements in 3D technology and the advent of Building Information Modeling (BIM) have revolutionized the Architectural, Engineering and Construction (AEC) industry.

BIM allows stakeholders to create and examine virtual representations of the architecture model and other utilities of their project. The virtual construction can be used to generate accurate construction drawings and address all constructability issues before construction begins.

Pinnacle Infotech has been acknowledged as the global leader in providing innovative BIM solutions. We have received several awards and recognition from both industry and government. Pinnacle received Deloitte Technology Fast 500 award in 2014 for 86% growth rate in Technology as per Asia Pacific Ranking and Deloitte Technology Fast 50 India award in 2015.

NASSCOM, the leading IT trade association, has named Pinnacle among the Top IT Innovators for 6 years between 2007-17. Pinnacle Infotech received Runner Up award in Best Enterprise Category during NASSCOM EAST IT Awards 2017. Our process orientation and quality control are per ISO standards – 9001:2015, 27001:2013, 19650-2, 19650-3, and 19650-5, plus EMS 14001:2015. As holders of **ISO 19650-5**, the esteemed international certification for BIM services, we ensure adept data management and transparent collaboration.

The successful completion of more than 15000 BIM projects in 43+ countries has provided Pinnacle with a deep understanding of international building codes and procedures. Our global delivery system allows us to maintain constant contact with our clients making geographical separation meaningless.

We recognize the importance of effective work process management and regular communication when outsourcing services. We have developed an ideal mix of infrastructure, experience, global presence and commitment to excellence that has led to long-term relationships with more than 2000 clients worldwide.

## 2. Benefits of Building Information Modeling (BIM)

### *Coordination*

Streamline communication with 3D visualization among all stakeholders for quick decision making during design and pre-construction phase.

### *Efficiency*

Eliminate stoppages by checking the accuracy and completeness of project plans and drawings before construction.

### *Quality*

Improving Quality by producing accurate Construction drawings directly from the 3D BIM model.

### *Savings*

Pre-construction reviews mean better use of manpower, better quality construction and reduced rework and wastages, all of which translates into lower costs.

### *Project Management*

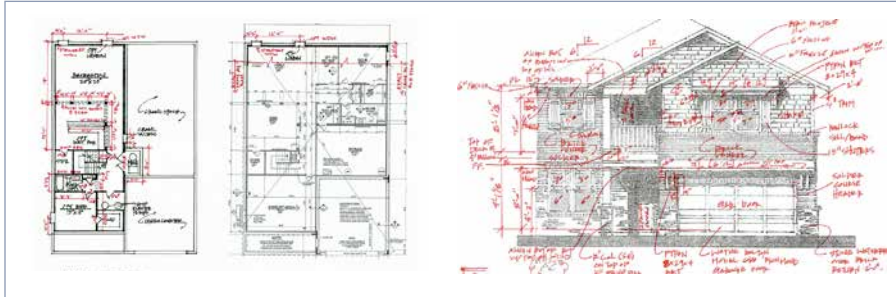
Detailed Material BOQ and drawings with 3D visualizations enable a better look at “The Big Picture” and aid in the review, scheduling and monitoring of each project.

*Our clients have reported up to 15% cost savings by successfully implementing BIM*



### 3. Transition from 2D Platform to 3D Platform

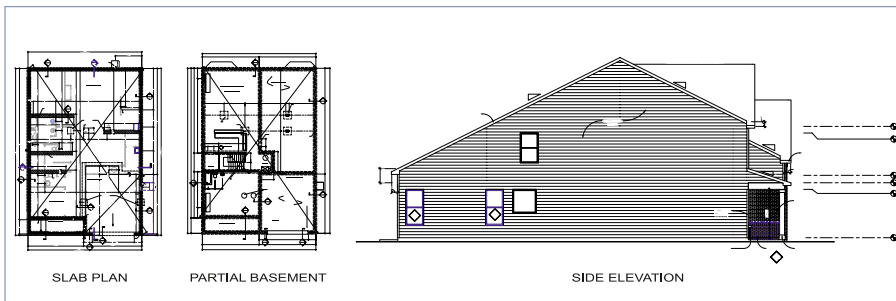
Pinnacle has the capability and experience to shift the entire design operation of an organization from 2D to a 3D platform. The 3D platform provides a realistic look and feel of the project at the initial stage, which facilitates the designers to interact with various stakeholders. Pinnacle has facilitated this transition for several companies using a well documented process and software tools developed in-house. We have a large database of Revit Family and other templates in order to standardize various design options and seamlessly transition from 2D to 3D platform.



*Client Inputs*



*3D Model*



*Construction Documents*

### 4. Creation of Various Design Options

Pinnacle also offers a unique way of showing client variations on their original designs. Using Design Options program we can create multiple design options to compare to the original design model. Unlike the traditional way of repeating and duplicating drawings, our team uses advanced BIM tools to create and manage variations. Each independent design option can be presented in a set of documents including Takeoffs.

*Option 1*



*Base Model*

*Option 2*



*Base Model with Storage Extension*

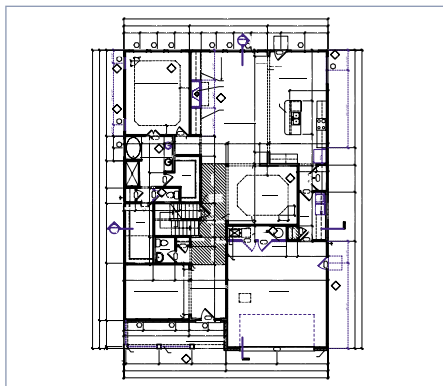
### 5. 3D Visualizations and Virtual Walkthroughs

Purchasing and selling home is a time consuming and costly affair. Both home builders and home buyers spend time looking at the plans and visiting construction sites to get an idea of what the finished home will look like. Using BIM we can revolutionize this process by creating a virtual tour of the proposed home with a detailed 360 degree view no further away than the click of a mouse. Pinnacle has helped property developers to create detailed virtual tours of multiple building types including single family homes, hospitals, hotels, stadiums and school buildings.

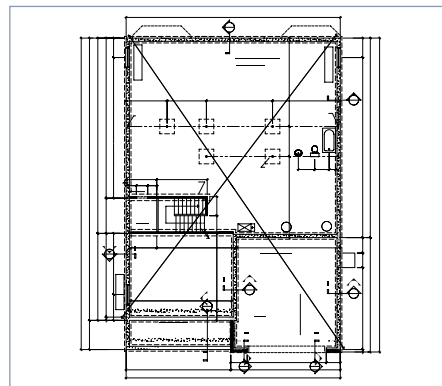
### 6. Construction Document Set

#### 6.1 Architecture

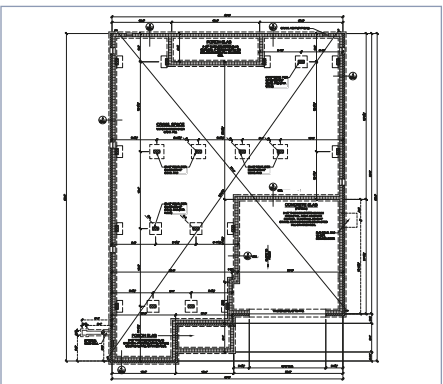
We specialize in creating design documents and construction documents from basic sketches and schematic designs. Final construction documents can be prepared in accordance with the client's wishes or as required by international standards. We create these documents in Revit 2019/2021 and CAD platforms like AutoCAD 2019/2021.



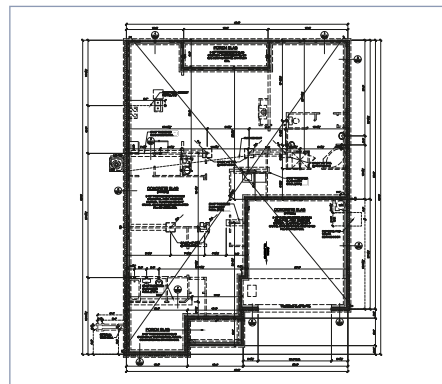
Floor Plan



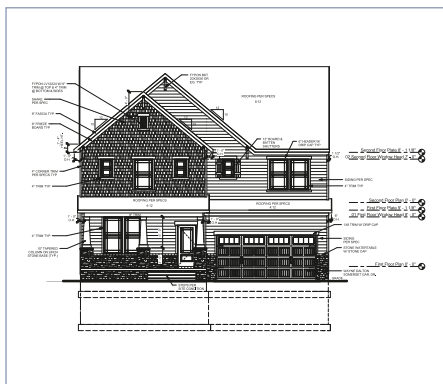
Basement Foundation Plan



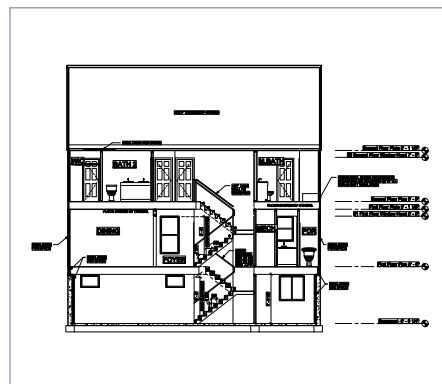
Crawl Foundation Plan



Slab Foundation Plan



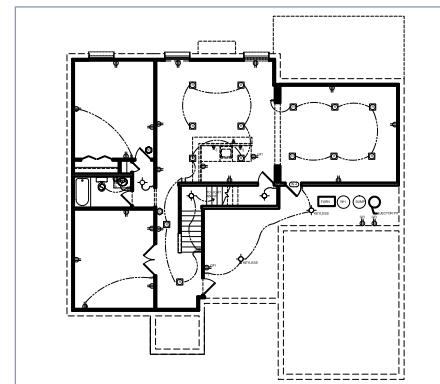
Front Elevation



Building Section

## 6.2 Electrical

Pinnacle can provide world class electrical BIM engineering and drafting services as outlined by the current international standards. We have the capability to offer 2D electrical drafting services for residential and commercial buildings, hospitals and educational and industrial buildings. These services produce all necessary documents required for commencement of work along with electrical take-off.



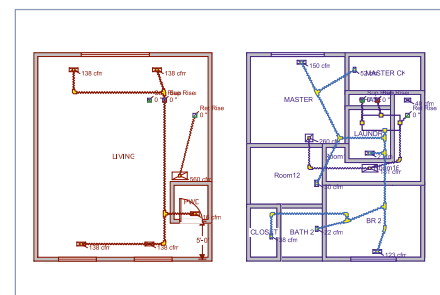
Basement Layout

UTILITY LEGEND			
1	STANDARD SWITCH	☒	RETURN AIR CHASE
2	3-WAY SWITCH	☒	TELEPHONE
3	4-WAY SWITCH	☒	CABLE TV OUTLET
4	STANDARD OUTLET (12" A/F (A/C))	☒	SECURITY
5	20" OUTLET	☒	CHIMNEY DOOR BELL
6	30" A/F (A/C) UTILITY	☒	DOOR BELL
7	HALF HOT OUTLET	☒	SMOKE DETECTOR
8	GROUND FAULT INTERRUPTOR	☒	GAS
9	GROUND FAULT INTERRUPTOR	☒	EXHAUST FAN (A/C)
10	WEATHER PROOFING	☒	COLD WATER
11	RECESS CAN LIGHT	☒	HOT WATER
12	RECESS EYE BALL	☒	HOT WATER
13	JUNCTION BOX	☒	HOT WATER
14	WALL MOUNTED LIGHT	☒	HOT WATER

Material Take-off

## 6.3 HVAC

Pinnacle can provide world class HVAC BIM engineering and drafting services as outlined by the current international standards. Our team can do the load calculations and simulate weather conditions depending on the location of the project. These services produce all the necessary documents required for construction and material procurement.



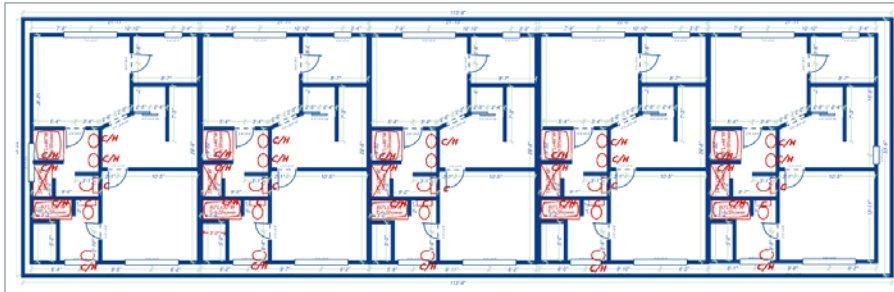
Input Schematic Layout



Output 3D Model

## 6.4 Plumbing

Pinnacle can provide world class Plumbing Drafting services as outlined by the current international Standards. This service produces all of the necessary documents required for construction and material procurement.



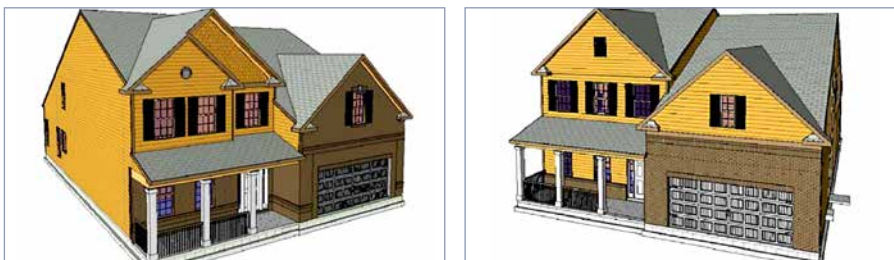
Input Schematic Layout



Output 3D Model

## 7. 3D Modeling for Rapid Prototype (3D Printers)

Physical models are very important marketing tools. Our team can generate accurate 3D prototype plans for use with 3D printers. Prospective buyers can visualize the design and can then feel the project. BIM models can easily be modified and edited for this at minimal cost.



3D Prototype Modeling

## 8. Quantity Take-off

BIM models allow automatic take-off of different elements (counts, measurements, conditions that affect cost) during the design stage allowing developers to estimate and compare the costs of using different design and material options.

Wall Schedule			
Type	Length	Area	Volume
EXT_6"	53' - 4 1/4"	177 SF	85.74 CF
EXT_6" with Brick	66' - 5 1/4"	182 SF	156.41 CF
Foundation - 12" Concrete	27' - 10"	18 SF	17.89 CF
INT_4"	12' - 9 5/16"	104 SF	33.13 CF
INT_6"	118' - 6 9/32"	777 SF	375.95 CF
EXT_6"	22' - 0 3/4"	113 SF	56.61 CF
EXT_6" with Brick	224' - 10 1/4"	1393 SF	1289.45 CF
EXT_6" with Brick Both Side	17' - 4"	61 SF	68.64 CF
EXT_6" with Brick Gable End	2' - 10 15/16"	2 SF	1.39 CF
EXT_8" with Brick	11' - 4"	56 SF	61.77 CF
INT_4"	260' - 2 11/16"	2193 SF	708.80 CF
INT_6"	84' - 8 1/4"	653 SF	323.82 CF
INT_8"	26' - 9 3/4"	117 SF	77.88 CF
INT_12"	13' - 4"	40 SF	39.54 CF
Foundation - 12" Concrete	286' - 3 1/2"	275 SF	274.60 CF
Curtain Wall I	3' - 9 3/4"	16 SF	0.00 CF

Casework Schedule	
Casework	Count
Base Cabinet-Double Door & 2 Drawer	5
Base Cabinet-Double Door Sink Unit	1
Base Cabinet-Single Door & Drawer	3
Casework Shelves 5 Shelf	2
Casework Shelves Rod & Shelf	1
Counter Top	1
Counter Top-L Shaped w Sink	1
Custom Counter Top	1
Upper Cabinet-Double Door-Wall	4
Upper Cabinet-Single Door-Wall	3
Vanity Cabinet-Double Door Sink Unit	4
Vanity Cabinet-Single Door & Drawer	1
Vanity Counter Top w Round Sink Hole	3

Area Schedule (Elevation E)		
Name	Area	
FIRST FLOOR PLAN	2489 SF	
TOTAL LIVING AREA	2489 SF	
GARAG	380 SF	
PORC	43 SF	
TOTAL NON-LIVING ARE	423 SF	

Window Schedule		
Window Tag	Type	Count
W24	24" x 48"	1
W34	36" x 48"	4
W35	36" x 60"	3
W36	36" x 72"	7
W44	48" x 48"	1
W46	48" x 72"	3
W66	72" x 72"	1

Door Schedule	
Door Tag	Type
EXT27	32" x 80"
EXT26	36" x 84"
EXT3	310x8
GD1	160x70
INT24	24" x 80"
INT32	32" x 80"

Quantity Take-Off

## 9. LotSpec Add-in for Revit and AutoCAD Architecture

LotSpec is an application add-in suite for Revit and AutoCAD Architecture. This add-in provides a solution for managing design options in a 2D or 3D workflow. It automates the process of creating "Lot Specific" construction documents used for permitting and construction based on customer option selections. LotSpec also provides a powerful set of tools for producing master plan sets commonly used for bidding and approval processes.

### Options Management software for Home Builders

- Automatically configure "Lot Specific" plan sets in minutes with selections from a menu
- "Rule Based" work flow with tools for assigning logic to elements within your project
- Handles "Option on Option" or "Nested Options" with ease
- Assign option logic to Object Properties
- Assign option logic to Text Notes
- Exterior and Interior Automatic Dimension tools
- Assign Selection Rules to avoid Conflicting Options
- Straight forward

## 10. Why Pinnacle

Each of our employees has ingrained in themselves the core values - 'EARTH' of our organization.



Excellence



Agility



Reliability



Teamwork



Honesty

### *Excellence*

Excellence is a way of life for us. Our commitment to hard work, creativity, and innovation allows us to reach our full potential in approach, operations, and collaborations. We foster a culture of excellence from the ground up within our organization to achieve operation at the highest industry standards.

### *Agility*

We understand that every business is different. We are highly agile and can adjust quickly to changing market conditions and client requirements. In addition, we offer a variety of business models to suit your specific needs at competitive prices.

### *Reliability*

Pinnacalites rely on trusted processes to consistently produce excellent results. We have over 30 years of experience in the AEC industry, and our work processes are ISO-certified.

### *Teamwork*

We work together to scale every challenge. We understand that it is only through teamwork that we can provide the best possible results for our customers. Pinnacle fosters a team-oriented culture where everyone is valued, and their contributions are encouraged and recognized.

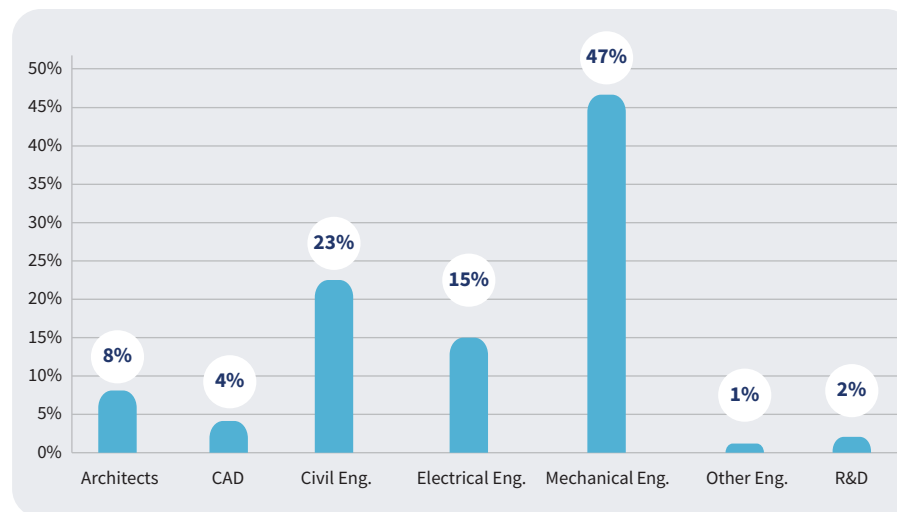
### *Honesty*

Honesty is our key value, and we hold ourselves to the highest standards of integrity. We strive to be transparent and clear in our communication to ensure that our clients get the best value for the money.

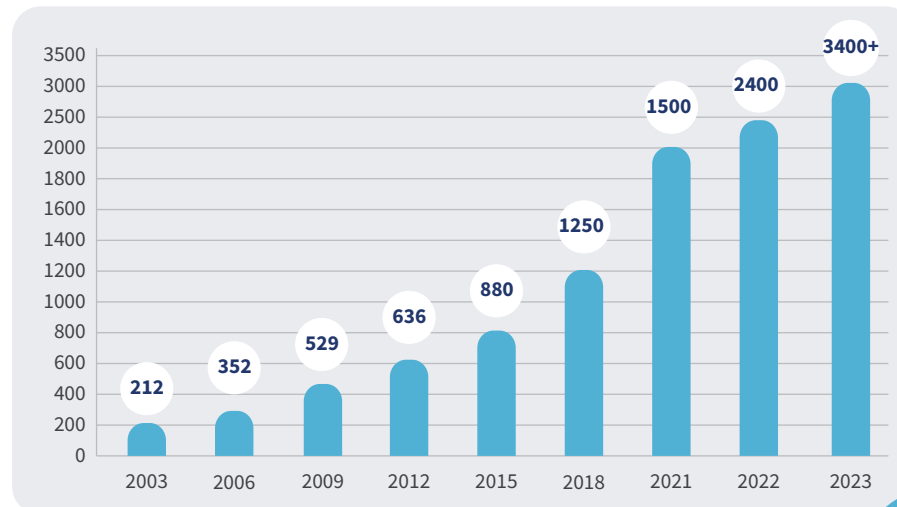
## 11. Our Team

Pinnacle's significant contribution to Building Information Modeling is made possible by its highly qualified and experienced workforce, including engineers, architects, and other experienced professionals. All our employees are well-versed in handling international construction codes and standards. We are proud of the diverse team and their global experience.

### *Employee Background*



### *Workforce Growth*





## 12. Our Infrastructure

Pinnacle has large state-of-art campuses in Durgapur, Jaipur, Kolkata & Madurai, comprising facilities like High-speed Bandwidth, Blade servers, an R&D center, a Datacenter, recreational zones, playgrounds, and more.

We also have equipped global delivery centers in the US (Houston and Atlanta), Canada (Toronto), UK (London), UAE (Dubai), Singapore, Germany (Munich), and Japan (Tokyo) that allow our employees to work in the same time zone as our customers.

Pinnacle's *Construct-ability Installation Lab* gives construction site experience to employees, integrating theoretical learning with practical experience. It enables our employees to deliver BIM solutions on time and with accuracy.



## 13. Our Work Processes

We strongly emphasize the significance of efficient work process management and consistent communication in the context of outsourcing services. Our process orientation and quality control are per ISO standards – 9001:2015, 27001:2013, 19650-2, 19650-3, and 19650-5, plus EMS 14001:2015. As holders of **ISO 19650-5**, the esteemed international certification for BIM services, we ensure adept data management and transparent collaboration. On orders, we assign a dedicated Relationship Manager, a competent Project Delivery Head, and Project Managers for focused execution.

### *Relationship Management*

Our relationship managers are co-located with customers, ensuring clear communication, managing timelines, and handling deliveries promptly to surpass customer expectations. They advise customers on the services Pinnacle provides and build long-term business relationships.

### *Production Process*

Project teams report to Project Delivery Head (PDH). The PDH provides technical leadership to the team and ensures standard work processes (as per ISO norms) are followed. They oversee project delivery. Project Delivery Heads periodically communicate with the client to get regular feedback and ensure the successful completion of the project.

Project Managers handle small teams for a customer and are responsible for understanding project requirements, project standards, invoicing processes, and communication protocols. They prepare project templates per project specifications, plan resources and align project delivery schedules.

### *Auditing Process*

The COE team is an independent body in the company for Process and quality management and monitors the process and quality through various audit parameters, sets up feedback management processes, carries out investigations in case of any complaints/concerns, and provides action items. This way, Pinnacle ensures consistency in the final deliverables throughout the company.

### *Quality Control Process*

Pinnacle's efficient processes and stringent quality control mechanisms have added certainty to 15000+ projects worldwide. Our process orientation and quality control are per ISO 9001:2015, ISO/IEC 27001:2013, ISO 19650-2, ISO 19650-3, and **ISO 19650-5** standards and are managed by an independent QC team.

## 14. Our Projects

### Cadence Project

*Port St. Lucie, USA*



### Anderson Pointe

*Olathe, USA*



### 6110 Worth Street

*Dallas, USA*



### 3220-3240 Brookberry Ln

*Murfreesboro, USA*



### 6203 Vanderbilt Ave

*Dallas, USA*



### 1818 Wakefield Dr

*Houston, USA*



## 15. Clients Speak

"Pinnacle has been a great resource and is willing to always take on work on short notice. The quality of work is excellent and always on time."

**Beazer Homes, USA**

"Communication was smooth. Progress sets were helpful. All in all we are impressed with the work quality and adherence to our standards."

**Godden Sudik Architects, USA**

Pinnacle does an outstanding job when getting projects turned around in a timely fashion. We greatly appreciate their efforts in doing so. I think the hardest thing with any client is getting projects nailed down at 100% quality as it requires clearer coordination efforts in getting expectations across. Regardless, their quality is topnotch and I highly recommend them.

**ProjX LLC, USA**

"I enjoy working with this team! I feel the team understands the general scope of projects and responds in a timely manner."

**Beazer Homes, USA**

"Pinnacle has helped me grow my business in a very short time without hiring my own employees which is critical to the business. I think of Pinnacle as my team."

**Gordon Thomas Design Group, USA**

"The team is always willing to help a lending hand when needed. You guys are a valuable team to have with Beazer and I look forward to utilizing you more in the upcoming year."

**Beazer Homes, USA**

"Continue to develop teams' knowledge in LotSpec and Pipeline Connect(X-Ray) functionality, I believe this is the direction home building is headed for production builders."

**OLO Builders, USA**

"The level of performance provided by Pinnacle with high volume limited deadline projects has been very beneficial to my company."

**Beazer Homes, USA**

"The team is great, very responsive and gets projects back in timely manner. There are some minor errors but the speed in correcting them make sit okay with us. The team really wants to help us succeed and I respect that."

**Greentech Homes, USA**



## India Office Locations

### Durgapur - HQ

Pinnacle Infotech Solutions  
Bidhannagar, Durgapur, WB 713212  
Phone: +91 343 6602222  
Fax: +91 343 6602230  
Email: info@pinnacleinfotech.com

### Madurai

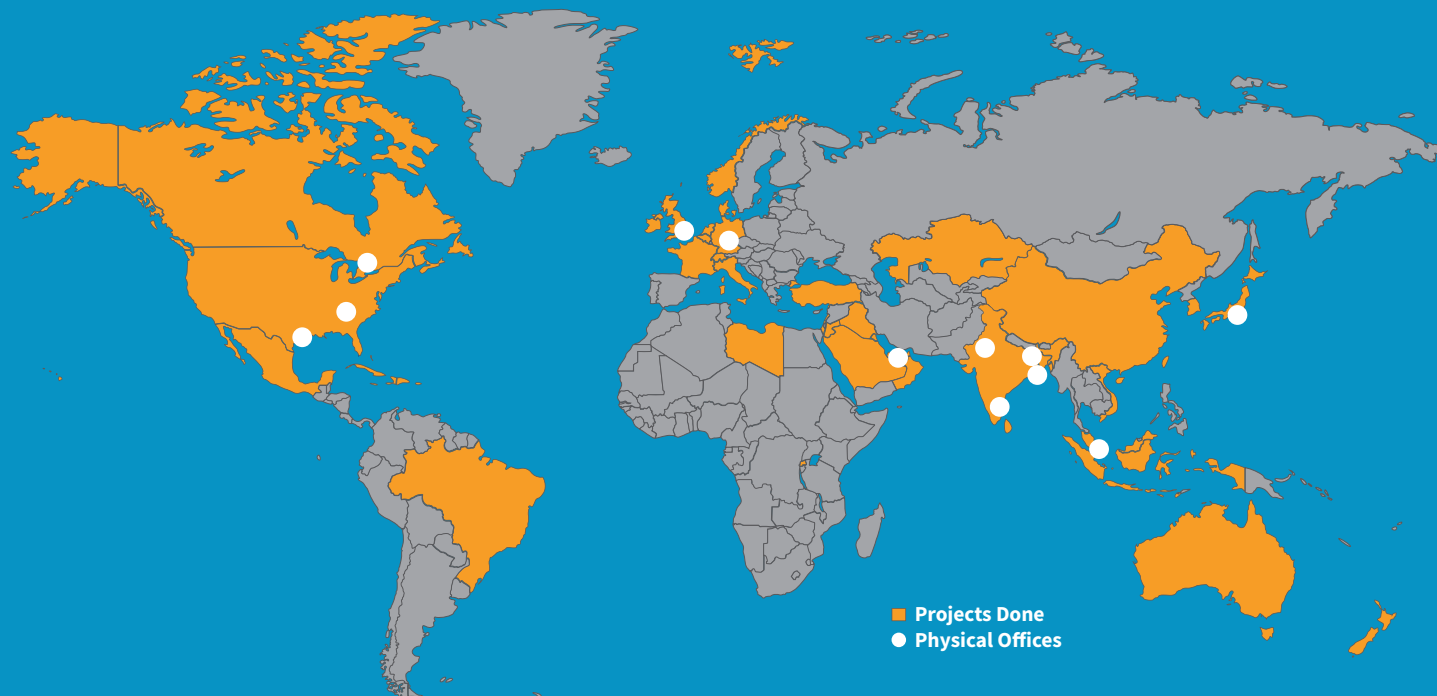
Pinnacle Infotech Solutions  
Elcot IT Park, Plot No - 5,6,&7, Vadapalanji,  
Madurai, Tamil Nadu, India - 625021  
Phone: +91 70100 97363

### Jaipur

Pinnacle Infotech Solutions  
Mahindra Sez, Jaipur, RJ 302037  
Phone: +91 141 722444

### Kolkata

Pinnacle Infotech Solutions  
Ecospace Business Park, Kolkata 700156  
Phone: +91 33 2324 5900



## International Office Locations

### USA - Houston

Pinnacle Infotech Inc.  
50 Sugar Creek Blvd,  
Sugar Land, TX 77478  
Mr. Biswanath Todi  
Phone: +1 713 780 2135  
Email: btodi@pinnacleinfotech.com

### USA - Atlanta

Pinnacle Infotech Inc.  
6065 Roswell Rd NE #625,  
Atlanta, GA 30328  
Mr. Mickey Cantrell  
Phone: +1 270 223 6319  
Email: mcantrell@pinnacleinfotech.com

### Canada

Pinnacle VDC Inc.  
3250 Bloor Street West, East Tower,  
Suite 600, Toronto, ON M8X2X9, Canada  
Mr. Cory Houle  
Phone: +1 613 290 7477  
Email: choule@pinnacleinfotech.com

### UK

Pinnacle Infotech Limited  
The Barley Mow Centre,  
London, W4 4PH  
Mr. Pat Saha  
Phone: +44 79600 26070  
Email: psaha@pinnacleinfotech.com

### Germany

Pinnacle BIM Technology GmbH  
Lilienthalstrasse 27, 85399 Hallbergmoos,  
Munich, Germany  
Mr. Bernhard Kössler  
Phone: +41 79 4393570  
Email: bkossler@pinnacleinfotech.com

### UAE

Pinnacle Infotech Technologies FZ-LLC  
Office No - 307, 3rd Floor, Building No. 7  
Dubai Outsource Zone, Dubai, UAE  
Mr. Yash Goyal  
Phone: +971 52 769 7465  
Email: dubai@pinnacleinfotech.com

### Singapore

Pinnacle BIM Technology PTE. LTD.  
BCA Braddell Campus, 200 Braddell Road,  
#13-63, Singapore 579700  
Mr. Kuntal Chakraborty  
Phone: +65 69508205  
Email: kchakraborty@pinnacleinfotech.com

### Japan

Pinnacle BIM Technology K.K.  
#403 7-1-5, Minamiaoyama, Minato-ku,  
Tokyo, Japan, 107-0062  
Mr. So Adachi  
Phone: +81 80 3008 9453  
Email: sadachi@pinnacleinfotech.com

