



# *Corporate Profile*



[pinnacleinfotech.com](http://pinnacleinfotech.com)



**Pinnacle  
Infotech**

Construct  
Certainty, with  
Technology

# Mission

Help the AEC industry optimize resources, cost and quality through innovative use of technology for:

- Sustainable and efficient design
- Collaborative pre-construction planning
- Agile construction process
- Reliable facility management

# Vision

Lead the global AEC industry to certainty and efficiency using technology.

## Associations:



# Our Values

- E Excellence**  
We take pride in our passion for excellence. It is a way of life for us.
- A Agility**  
We are always at the edge of technology and driven by agile transformations.
- R Reliability**  
We have ISO-certified processes and workflow to produce consistent and reliable performance.
- T Teamwork**  
Pinnacle provides an environment where teams collaborate effectively to excel.
- H Honesty**  
We win the trust of our stakeholders through integrity, straightforwardness, and transparency.

# Index

<b>1. Introduction</b>	<b>Page 04</b>
<b>2. Our Team</b>	<b>Page 04</b>
<b>3. Why Pinnacle?</b>	<b>Page 05</b>
<b>4. Our Services</b>	<b>Page 06</b>
4.1 Pre-Bid Estimation	Page 06
4.2 BIM Services	Page 06
4.3 BIM Consulting	Page 08
4.4 Facilities Management	Page 10
4.5 Digital Twin	Page 10
4.6 CAD Drafting Services	Page 11
<b>5. Verticals We Serve</b>	<b>Page 11</b>
<b>6. Our Work Process</b>	<b>Page 11</b>
<b>7. Awards &amp; Recognition</b>	<b>Page 12</b>
<b>8. Our Projects</b>	<b>Page 12</b>
<b>9. Clients Speak</b>	<b>Page 15</b>



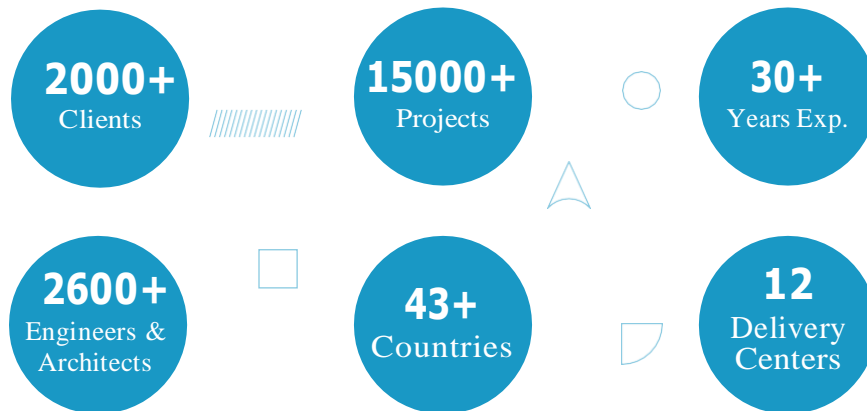
# 1. Introduction



Durgapur office campus (HQ)

Pinnacle Infotech Solutions offers Building Information Modeling (BIM) solutions to Architecture, Engineering & Construction (AEC) firms globally. We provide Design & Consultancy Services, Pre-construction services - Constructability review and Coordination, Value Engineering, logistic planning, construction management, Facilities management and Digital Twin.

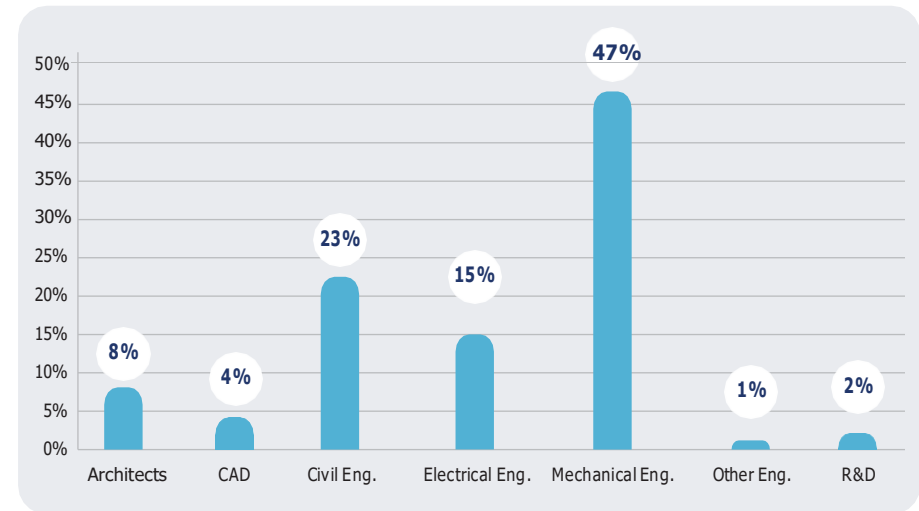
In the last 30+ years, Pinnacle has been leading the Global AEC industry and has completed more than 15000+ projects across 43 countries.



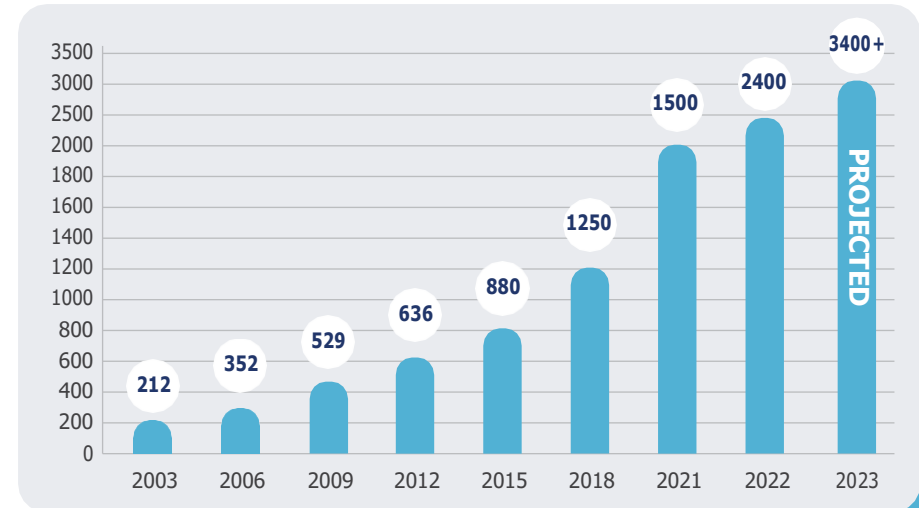
# 2. Our Team

Pinnacle's significant contribution to Building Information Modeling is made possible by its highly qualified and experienced workforce, including engineers, architects, and other experienced professionals. All our employees are well-versed in handling international construction codes and standards. We are proud of the diverse team and their global experience.

## Employee Background



## Workforce Growth



### Our Infrastructure

Pinnacle has large state-of-art campuses in Durgapur, Jaipur, Kolkata & Madurai, comprising facilities like High-speed Bandwidth, Blade servers, an R&D center, a Datacenter, recreational zones, playgrounds, and more.

We also have equipped global delivery centers in the US (Houston and Atlanta), Canada (Toronto), UK (London), UAE (Dubai), Singapore, Germany (Munich), and Japan (Tokyo) that allow our employees to work in the same time zone as our customers.

Pinnacle’s Construct-ability Installation Lab gives construction site experience to employees, integrating theoretical learning with practical experience. It enables our employees to deliver BIM solutions on time and with accuracy.



### 3. Why Pinnacle

Each of our employees has ingrained in themselves the core values - 'EARTH' of our organization.



Excellence



Agility



Reliability



Teamwork



Honesty

#### Excellence

Excellence is a way of life for us. Our commitment to hard work, creativity, and innovation allows us to reach our full potential in terms of approach, operations, and collaborations. We foster a culture of excellence from the ground up within our organization to achieve operation at the highest industry standards.

#### Agility

We understand that every business is different. We are highly agile and can adjust quickly to changing market conditions and client requirements. In addition, we offer a variety of business models to suit your specific needs at competitive prices.

#### Reliability

Pinnacle relies on trusted processes to consistently produce excellent results. We have over 30 years of experience in the AEC industry, and our work processes are ISO-certified.

#### Teamwork

We work together to scale every challenge. We understand that it is only through teamwork that we can provide the best possible results for our customers. Pinnacle fosters a team-oriented culture where everyone is valued, and their contributions are encouraged and recognized.

#### Honesty

Honesty is our key value, and we hold ourselves to the highest standards of integrity. We strive to be transparent and clear in our communication to ensure that our clients get the best value for the money.

## 4. Our Services

Pinnacle offers end-to-end BIM Services allowing clients to get complete control of construction projects. Our BIM engineers work with 3D, 4D, 5D, 6D, and 7D BIM to facilitate project coordination, collaboration, construction management, asset management, risk mitigation, logistic planning, and cost estimate. We follow a structured approach for providing BIM Consulting, Engineering, Modeling, Facilities Management, and Digital Twin services.

### 4.1 Pre-Bid Estimation

Pinnacle's pre-bid estimation Services aid contractors in winning bids through accurate estimates according to industry standards.

Digital estimation tools offer estimators the capability to estimate quickly. Moreover, they allow customization of labor and material rates as per requirements.

### 4.2 BIM Services

#### *Architectural Design*

Our dedicated team of skilled personnel interacts with architects to understand their design intent and provides value-added support as the design evolves from the conceptual /schematic stage to the construction stage.

#### *Structural Analysis*

Our structural design analysis services design and validates design parameters viz., Bending moment, stress-strain, lateral loading, etc. We utilize advanced design tools like RISA, ETABS, STAD PRO, Tekla & HILTI, etc., to generate accurate reports quickly.

#### *MEP Design Services*

Pinnacle works closely with MEP Design Engineering firms during the design development stages. We work with various inputs and validate the design for constructability, applicable codes, performance, and maintenance.

We integrate advanced design tools like Dialux, Elite, PIPENET & ETAP, which enable faster iterations leading to substantial savings in design time and costs.

#### *Energy Optimization*

Our team assists you with building energy optimization services to migrate to low-carbon and renewable energy sources to enhance energy efficiency. Whether it's energy system integration or the detailed design of energy infrastructure, we help clients to identify the best path to sustainability.

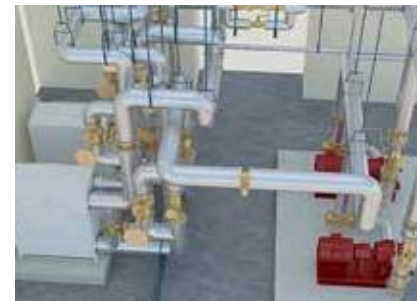
#### *3D Modeling*

We generate coordinated models using 3D Modeling services. It allows our clients to check possible interference among all building systems through 3D BIM Modeling Services.

Our 3D BIM models assist construction companies in visualizing schematic structures before construction. Therefore, it can offer better project planning for our clients.

#### *Constructability Review*

We work on BIM models based on the client's RFI response, document the status in a log, and follow up regularly with clients to resolve all constructability issues during the pre-construction stage. As a result, constructability review prevents work stoppages and eliminates rework and wastage of material before the construction process starts.



#### **Before CR**

*Equipment missing in mechanical plant room (Air separator, Expansion Tank Break Tank, Carbon Filter)*



#### **After CR**

*Missing equipment added for optimal functioning*

## Clash Coordination

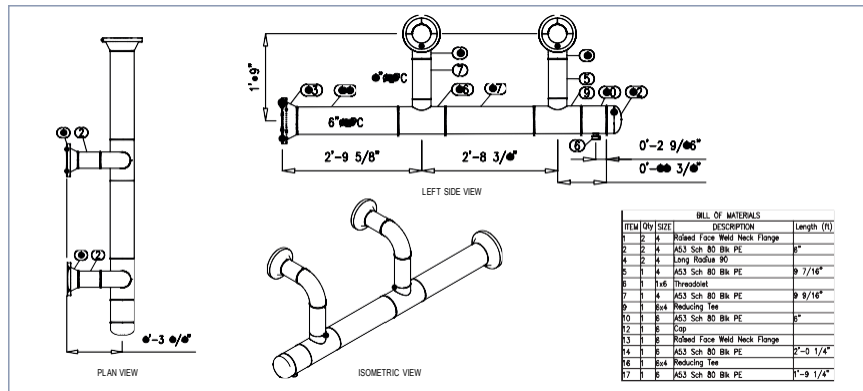
BIM Clash Coordination Services assist in detecting interference between trades during preconstruction. Our BIM Clash detection and coordination services cover the preparation of virtual 3D BIM coordination drawings to ensure that the model is fully coordinated and free from clashes.

## Construction Documentation

Construction documents provide the basis for workshop fabrication and on-site installation. They ensure that all stakeholders clearly understand the project requirements and can work together to deliver a successful outcome.

## Design Prefabrication/ Spool Drawings

We create spool drawings and maps as per the client's standards. These segmented spools contain details to facilitate prefabrication. Once fabricated, they can be quickly assembled and installed at the site.



Plumbing Spool Sheet

## Quantity Takeoff

We generate accurate Quantity Takeoff from fully-coordinated 3D models. The Quantity Takeoff is automatically updated to reflect any changes in the model.

All equipment and fixtures details are tabulated to help contractors estimate project costs and plan material procurement.

## Construction Site Logistics

Construction site logistics plan is necessary for the project to optimize the use of site space and enhance safety.

We help you by creating visual representations to facilitate efficient planning and implementation of various logistical components in a construction site. We evaluate projects meticulously to offer customized logistics solutions.



Construction Site Logistics Sample

## 4D/5D Construction Simulation & Marketing Presentation

Our 4D/5D Construction Simulation services add a new dimension: the visualization of the project timeline phase-wise. Simulations in construction have a significant role in project planning and estimating material, labor and machinery requirements each day.

We also create compelling BIM marketing presentations to help clients secure competitive bids. Our marketing BIM presentations involve 3D walkthroughs and rendered images to give a lifelike feeling of moving through the construction space in reality through the exterior and interior of the building reflecting the method statement of the contractor.

### *Laser Scan/Point Cloud Data*

Point Cloud data from 3D scanning provides an exact and thorough "as-built" drawing. We capture detailed information about an element in its physical space to enable precise and accurate modeling, coordination, and quantity take-offs.



*Input Scan Recap View*



*Output BIM 3D Model*

## **4.3 BIM Consulting Services**

### *BIM Strategy Plan*

Our BIM Strategy Plan services allow clients to embrace the latest BIM processes and take their workflows to the next level of technological advancement. Clients can expect comprehensive BIM integration into their workflow, including BIM training and advisory services.

### *BIM Implementation*

The transition from traditional processes to BIM-integrated workflows starts with a BIM implementation plan. It outlines the processes, strategies, and workflows to implement BIM in projects. BIM implementation consists of the following stages:

- Audit
- Setting Goals
- Definition of Strategy and Process
- Budget Planning
- Training and Education
- Monitoring

### *BIM Execution Plan*

Using advanced software tools, Pinnacle forms comprehensive BIM Execution Plans for our clients to transform their existing business processes, increase collaboration, and reduce delays in communication. We identify bottlenecks by reviewing existing processes and defining and implementing BIM methodologies to address them.

### *BIM Training*

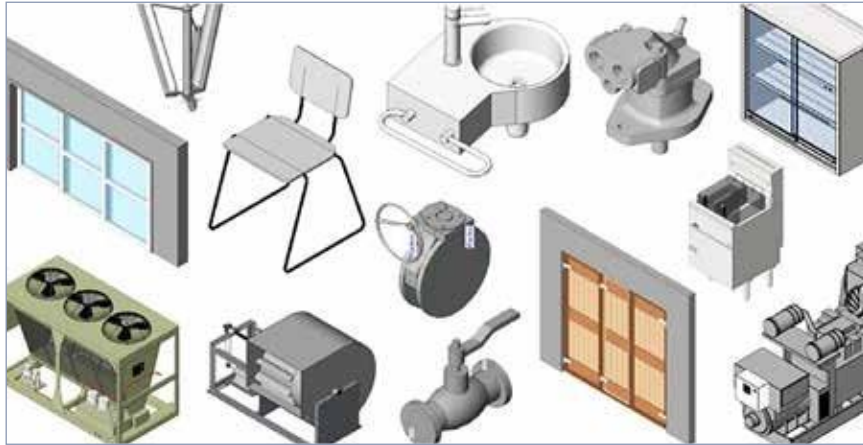
Organizations that embrace BIM to replace their existing workflow require extensive training tailor-made for their work processes and industry. We can provide the best training so that our clients can leverage the full value of BIM and extract the maximum value for their projects.

Our consulting services are an ideal fit for General Contractors, Owners, Architects, and Engineers.



### *BIM Template and Content Creation*

Our BIM experts are highly experienced in transforming products and systems into parametric BIM objects using Revit, while Content Creation makes the product available to designers.



Examples of content creation

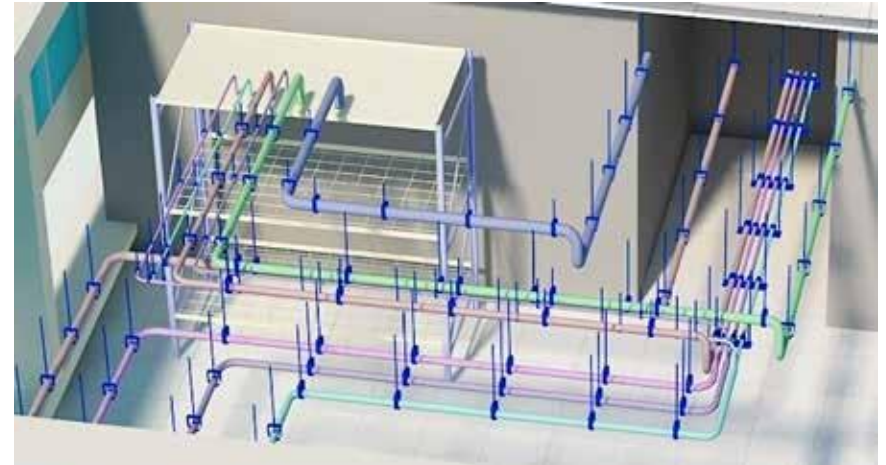
### *BIM IT Infrastructure Planning*

BIM IT Infrastructure Planning involves regular audits of existing IT infrastructure for BIM implementation.

- Establishes clarity of project intent to stakeholders
- Delivers critical foundation for business agility
- Ensures data fidelity & stability across the project lifecycle

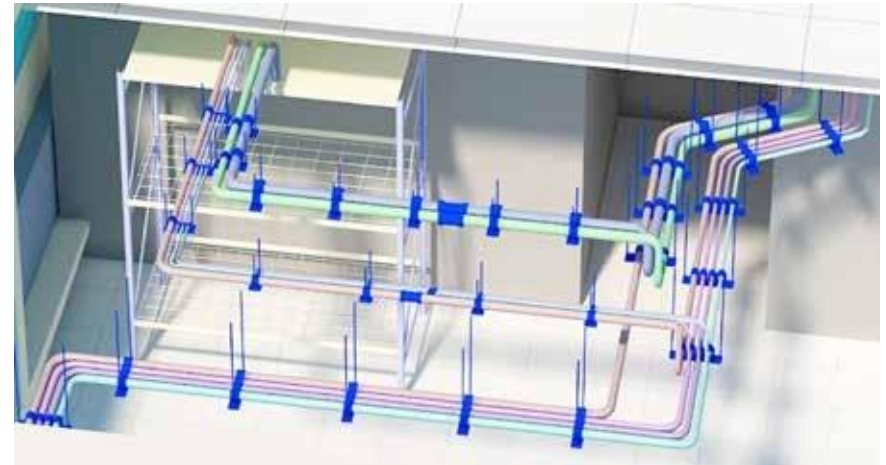
### *Value Engineering*

Our in-house team brainstorms to re-design the MEP layout to increase efficiency and lower cost. We focus on proper spacing and positioning of hangers to bear maximum load while optimizing cost.



**Before VE**

No. of Clevis hangers: 100 | Fittings: 300



**After VE**

No. of Trapeze hangers: 70 | Fittings: 210

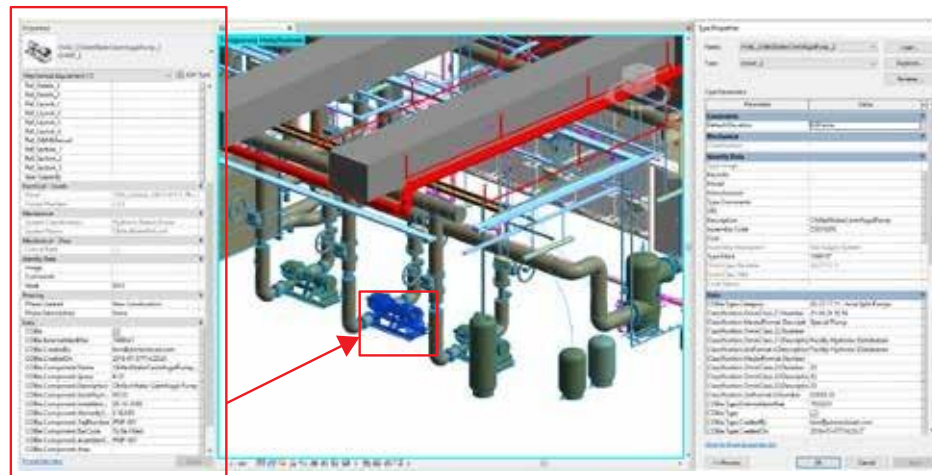
## 4.4 Facilities Management

Pinnacle's BIM-centric Facility Management services enable owners and project managers to access accurate information about project design and other components from a central database.

Our experts use the COBie (Construction Operations Building Information Exchange) standard to streamline asset data collection, such as maintenance schedules, equipment information, etc.

The benefits of these services are:

- Centralized platform for easy access to data
- Instant access to the latest data from a single model
- Integration with FM software tools
- Preventive Maintenance Planning



Facility Management Example

## 4.5 Digital Twin

Digital Twins are intelligent BIM models and dynamic digital replicas of physical assets, processes, and systems that can be used for facility management.

During the construction lifecycle, the BIM model accumulates data as it evolves from one stage to another. The digital twin integrates this multi-stage information to depict the current state of facilities.

Digital Twin benefits include -

- Informed Decision Making
- Real-time Condition Monitoring Dashboards
- Predictive Risk & Failure Assessment
- Preventive Maintenance
- Regular Performance Testing
- Data Analytics with Sensors and IoT
- VR-assisted maintenance



Digital Twin Example

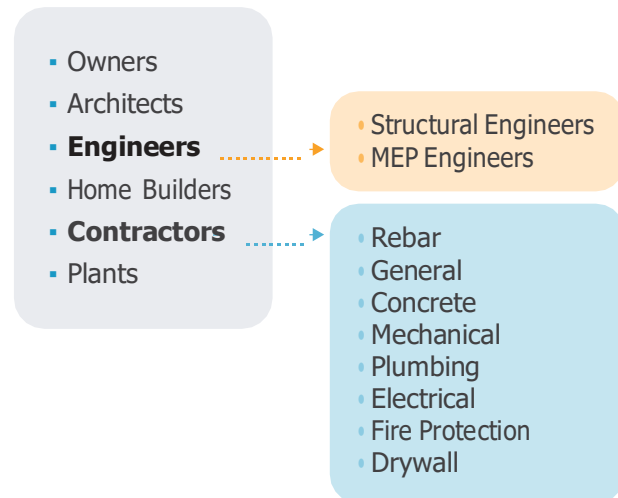
## 4.6 CAD Drafting Services

Our teams have extensive experience providing the following CAD Drafting services:

- Scanned Drawing Conversion (PDF to CAD)
- Redline Markups Update
- Indexing and Renaming
- Landscaping Service
- Bulk Drawing Conversion

## 5. Verticals We Serve

Pinnacle's BIM services bring certainty to every stage of construction for stakeholders across the global AEC industry. We work with:



## 6. Our Work Processes

We strongly emphasize the significance of efficient work process management and consistent communication in the context of outsourcing services. Our process orientation and quality control are per ISO standards – 9001:2015, 27001:2013, 19650-2, 19650-3, and 19650-5, plus EMS 14001:2015. As holders of **ISO 19650-5**, the esteemed international certification for BIM services, we ensure adept data management and transparent collaboration. On orders, we assign a dedicated Relationship Manager, a competent Project Delivery Head, and Project Managers for focused execution.

### *Relationship Management*

Our relationship managers are co-located with customers, ensuring clear communication, managing timelines, and handling deliveries promptly to surpass customer expectations. They advise customers on the services Pinnacle provides and build long-term business relationships.

### *Production Process*

Project teams report to Project Delivery Head (PDH). The PDH provides technical leadership to the team and ensures standard work processes (as per ISO norms) are followed. They oversee project delivery. Project Delivery Heads periodically communicate with the client to get regular feedback and ensure the successful completion of the project.

Project Managers handle small teams for a customer and are responsible for understanding project requirements, project standards, invoicing processes, and communication protocols. They prepare project templates per project specifications, plan resources and align project delivery schedules.

### *Auditing Process*

The COE team is an independent body in the company for Process and quality management and monitors the process and quality through various audit parameters, sets up feedback management processes, carries out investigations in case of any complaints/concerns, and provides action items. This way, Pinnacle ensures consistency in the final deliverables throughout the company.

### *Quality Control Process*

Pinnacle's efficient processes and stringent quality control mechanisms have added certainty to 15000+ projects worldwide. Our process orientation and quality control are per ISO 9001:2015, ISO/IEC 27001:2013, ISO 19650-2, ISO 19650-3, and **ISO 19650-5** standards and are managed by an independent QC team.

## 7. Awards & Recognition

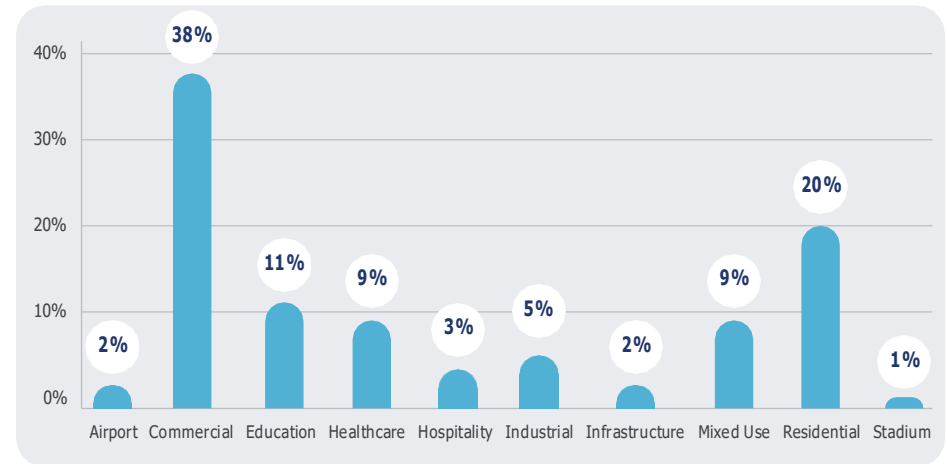
Pinnacle has won accolades in the form of numerous awards and recognition from the Government, Industry, and prestigious national and international associations.



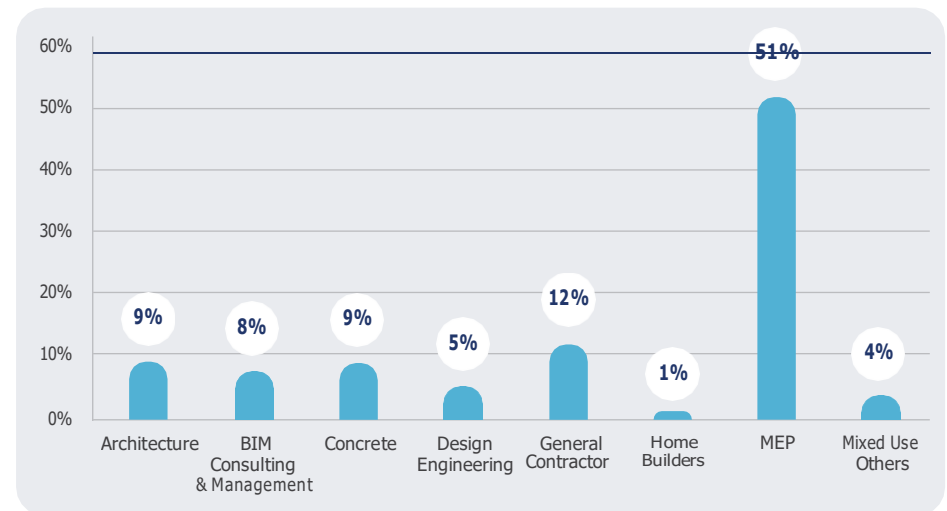
## 8. Our Projects

We have successfully executed 15000+ BIM projects for our clients in 43 countries across the world. Our portfolio of projects for our 2000+ customers includes Airports, Manufacturing Units, Data Centres, Hospitals, Stadiums, High-Rise Towers, and more.

*Project Statistics - Industry Sectors*



*Project Statistics - Segment Wise*



## Project Portfolio

### Dubai International Airport

*Dubai, UAE*



### ASHRAE Global HQ

*Atlanta, USA*



### St. Mary Magdalene C of E School

*Northampton, UK*



### JW Marriot

*Nashville, USA*



### New Children's Hospital

*Dublin, Ireland*



### Cincinnati Union Terminal

*Cincinnati, USA*



## Projects Portfolio

### Pulau Tekong

*Tekong Island, Singapore*



### Battersea Power Station

*London, England*



### White Castle Building

*Columbus, USA*



### Lusail Stadium

*Lusail, Qatar*



### Lord's Cricket Ground

*London, England*



### Berlin Data Center

*Berlin, Germany*



## 17. Clients Speak

The Pinnacle team we are working with are always good at communication, always responsive to emails and drawing deadlines. We are happy with the service they've provided us on this project so far.

### **EMEC, UK**

Happy with the overall service. Fast to respond and ask queries on anything that ye were unsure of so that the project wasn't held up. issued the model when specified and it's to the standard we asked for.

### **OSENG Ltd, Ireland**

Pinnacle have been very professional and very impressive with how fast they were able to get drawings back to us. The quality of plan drawings was very impressive and drawn to a good standard, however the detail drawings were a little lacking in comparison to the plan drawings we received.

### **Glancy Nicholls Architects, UK**

The CDR's were very well presented and intuitive. This basic clash detection process was perfectly executed on time and without fuss. Pinnacle is an ideal BIM partner, allowing the principal design team to dedicate their resource to design tasks.

### **Willmott Dixon Construction , UK**

Great Team to work with and as with any skilled job, continuous improvement and consistency will be expected to maintain the expectations.

### **Malachy Walsh and Partners, UK**

We found Pinnacle to be great communicators, more than competent with Revit and MEP services knowledge and able to meet our standards as well as some challenging delivery times.

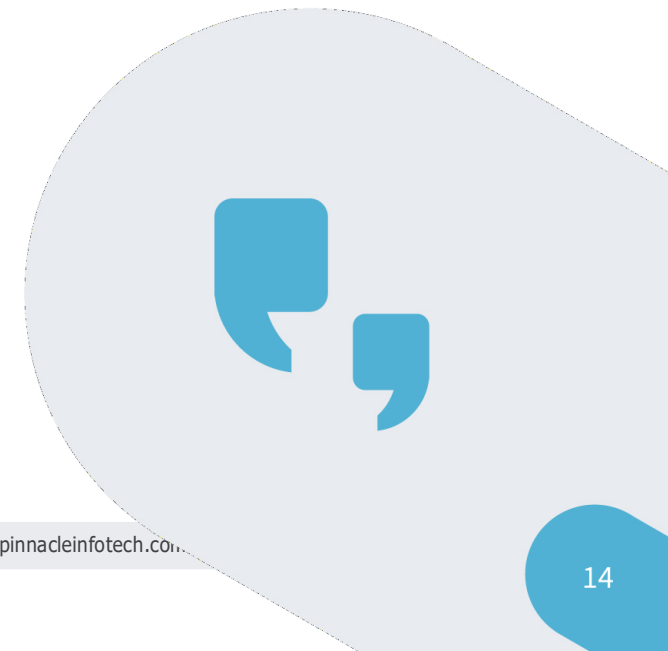
### **PPA Mechanical & Electrical Consulting Engineers , UK**

As with all of the previous projects that we have worked with Pinnacle on, this project came together seamlessly and without any problems. The Pinnacle team is very detailed in their approach, always meets our demanding schedules, and always with excellent quality in the finished product. There are not many companies that work for/with us that can keep up with our pace, but Pinnacle can every single time. I would personally recommend them to anyone in need of BIM, CAD, and drawing coordination services.

### **Rivers Plumbing and Electric, USA**

The guys have been in front of the rest of the team for the building to coordinate changes and detailing. Great Job.

### **Haltom Engineering, USA**



## India Office Locations

### Durgapur - HQ

Pinnacle Infotech Solutions  
Bidhannagar, Durgapur, WB 713212  
Phone: +91 343 6602222  
Fax: +91 343 6602230  
Email: info@pinnacleinfotech.com

### Madurai

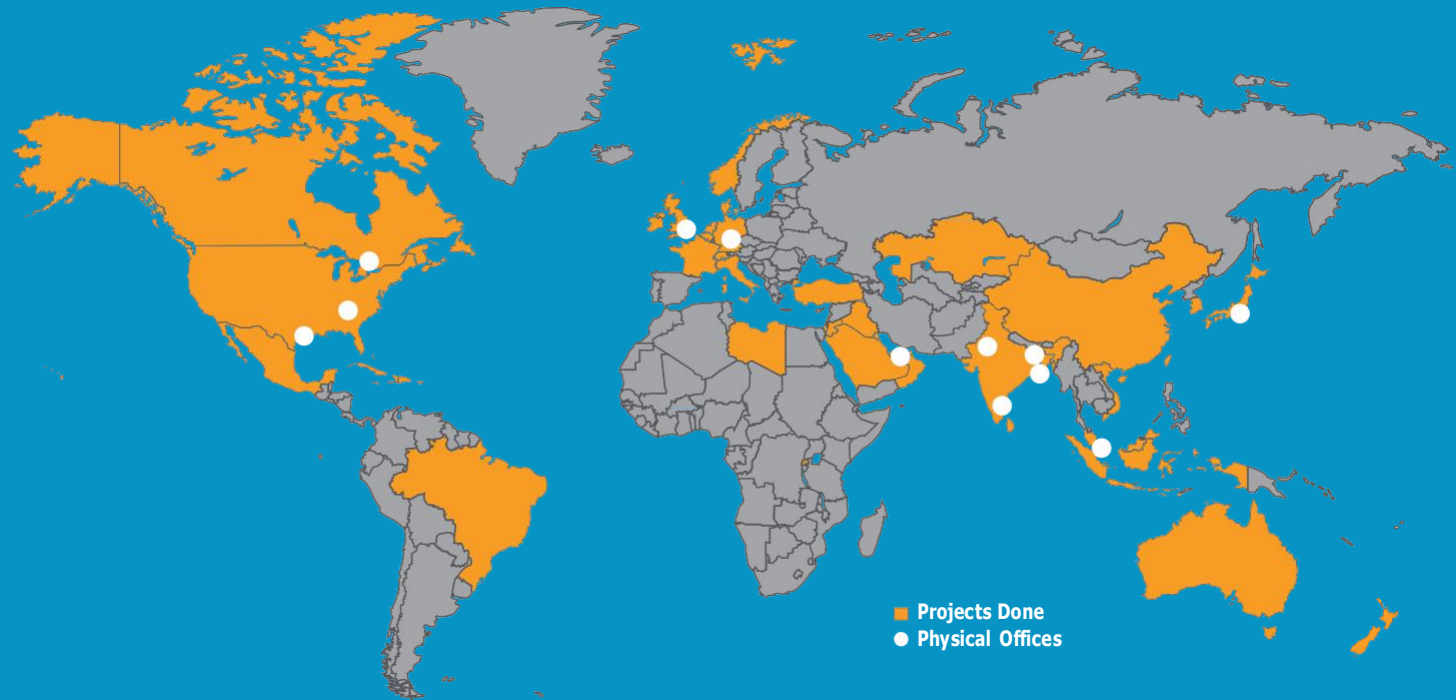
Pinnacle Infotech Solutions  
Elcot IT Park, Plot No - 5,6,&7, Vadapalanji,  
Madurai, Tamil Nadu, India - 625021  
Phone: +91 70100 97363

### Jaipur

Pinnacle Infotech Solutions  
Mahindra Sez, Jaipur, RJ 302037  
Phone: +91 141 722444

### Kolkata

Pinnacle Infotech Solutions  
Ecospace Business Park, Kolkata 700156  
Phone: +91 33 2324 5900



## International Office Locations

### USA - Houston

Pinnacle Infotech Inc.  
50 Sugar Creek Blvd,  
Sugar Land, TX 77478  
Mr. Biswanath Todi  
Phone: +1 713 780 2135  
Email: btodi@pinnacleinfotech.com

### USA - Atlanta

Pinnacle Infotech Inc.  
6065 Roswell Rd NE #625,  
Atlanta, GA 30328  
Mr. Mickey Cantrell  
Phone: +1 270 223 6319  
Email: mcantrell@pinnacleinfotech.com

### Canada

Pinnacle VDC Inc.  
67 Yonge Street, Suite 701,  
Toronto, Ontario, Canada, M5E 1J8  
Mr. Cory Houle  
Phone: +1 613 290 7477  
Email: choule@pinnacleinfotech.com

### UK

Pinnacle Infotech Limited  
The Barley Mow Centre,  
London, W4 4PH  
Mr. Pat Saha  
Phone: +44 79600 26070  
Email: psaha@pinnacleinfotech.com

### Germany

Pinnacle BIM Technology GmbH  
Lilienthalstrasse 27, 85399 Hallbergmoos,  
Munich, Germany  
Mr. Bernhard Kössler  
Phone: +41 79 4393570  
Email: bkossler@pinnacleinfotech.com

### UAE

Pinnacle Infotech Technologies FZ-LLC  
Office No – 307, 3rd Floor, Building No. 7  
Dubai Outsource Zone, Dubai, UAE  
Mr. Yash Goyal  
Phone: +971 52 769 7465  
Email: dubai@pinnacleinfotech.com

### Singapore

Pinnacle BIM Technology PTE. LTD.  
One North, 67 Ayer,  
Singapore, 139950  
Mr. Kuntal Chakraborty  
Phone: +65 69508205  
Email: kchakraborty@pinnacleinfotech.com

### Japan

Pinnacle BIM Technology K.K.  
#403 7-1-5, Minamiaoyama, Minato-ku,  
Tokyo, Japan, 107-0062  
Mr. So Adachi  
Phone: +81 80 3008 9453  
Email: sadachi@pinnacleinfotech.com

