

**LRQA** ISO 19650  
Certified

# *CAD Support Services* \_\_\_\_\_

## For HP SitePrint



[pinnacleinfotech.com](http://pinnacleinfotech.com)



**Pinnacle  
Infotech**

Construct  
Certainty, with  
Technology

# Mission

Help the AEC industry optimize resources, cost and quality through innovative use of technology for:

- Sustainable and efficient design
- Collaborative pre-construction planning
- Agile construction process
- Reliable facility management

# Vision

Lead the global AEC industry to certainty and efficiency using technology.

## Associations:



# Our Values

- E Excellence**  
We take pride in our passion for excellence. It is a way of life for us.
- A Agility**  
We are always at the edge of technology and driven by agile transformations.
- R Reliability**  
We have ISO-certified processes and workflow to produce consistent and reliable performance.
- T Teamwork**  
Pinnacle provides an environment where teams collaborate effectively to excel.
- H Honesty**  
We win the trust of our stakeholders through integrity, straightforwardness, and transparency.

# Our Way of Giving Back

## Ankuran Foundation

A first-of-its-kind, not-for-profit, national network of world-class learning centers that impart Science Education through experiential learning to school students from diverse backgrounds. To learn more, visit [Ankuran.org](http://Ankuran.org)



# Index

1. Introduction	Page 04
2. Pinnacle's CAD Support Partnership with HP	Page 04
3. Precision CAD Services for HP SitePrint Projects	Page 04
4. HP Negotiated – Special Introductory Pricing	Page 06
5. Order Process	Page 06
6. FAQs	Page 06
7. Other Key Services We Offer	Page 07
8. Why Pinnacle	Page 08
9. Our Team	Page 08
10. Our Infrastructure	Page 09
11. Our Work Processes	Page 09
12. Awards & Recognition	Page 10
13. Our Specialized Solutions	Page 10
14. Our Projects	Page 10
15. Clients Speak	Page 11



# 1. Introduction



Durgapur office campus (HQ)

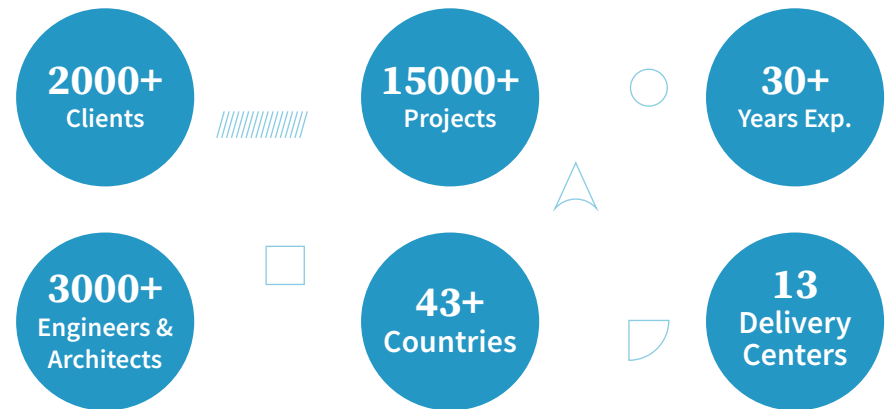
Construction layout technology is taking the industry by storm. This is the chance for AEC players to adopt the game-changing technology at its earliest prime and disrupt workflows through CAD innovation.

Pinnacle Infotech's pioneering expertise in revolutionizing CAD engineering is propelled by our cutting-edge SitePrint Technology solutions, setting a new standard for futuristic precision, efficiency, and innovation in construction site management.

Pinnacle Infotech is the global leader in providing innovative end-to-end BIM and CAD-drafting solutions to Architecture, Engineering & Construction (AEC) firms worldwide. With over 30 years in the domain and having delivered 15000+ projects serving 2000+ clients in 43+ countries across 6 continents, we have an unparalleled service record and a vast folio of iconic projects to our credit.

We are an **ISO 19650**, ISO 9001:2015, ISO/IEC 27001:2013, and Environment Management System (EMS) 14001:2015 certified company, which makes us a top BIM solution company globally.

With industry-leading accreditations and meaningful partnerships in the domain, we have always aimed to keep our virtues and commitments high to deliver the best in business.



## 2. Pinnacle's CAD Support Partnership with HP

HP (Hewlett-Packard) is a leading global technology company known for its innovative products and solutions in computing, printing, and 3D printing.

HP Site Robotics is a division of HP that focuses on automating construction site processes using advanced robotic technologies to enhance efficiency, safety, and productivity on construction projects.

HP has partnered with Pinnacle Infotech to offer enterprise-exclusive service for prepping CAD files as per the preferred file format for their robotic solution.

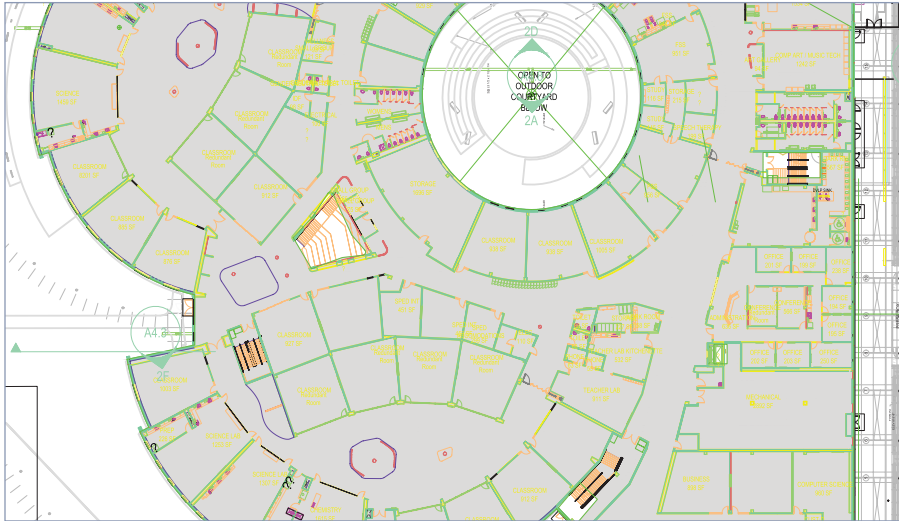


## 3. Precision CAD Services for HP SitePrint Projects

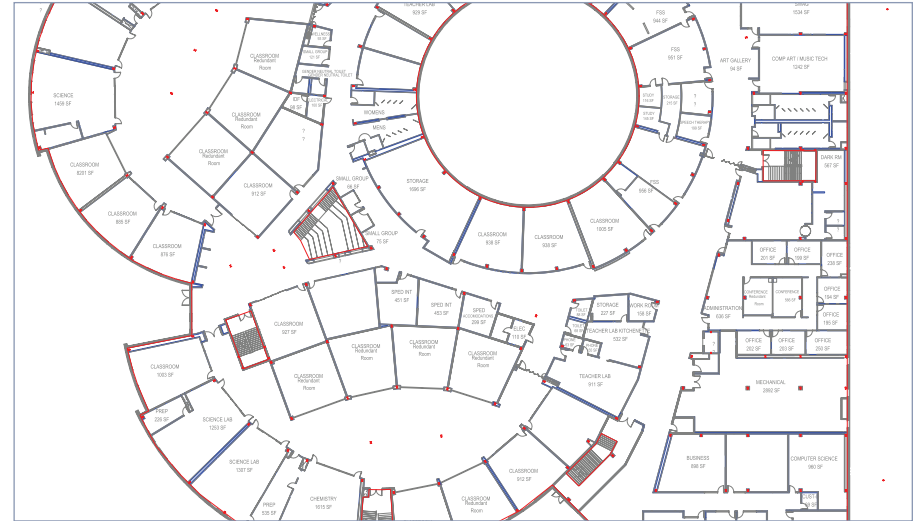
At the heart of HP SitePrint's operation lies the 2D CAD file. This file serves as the blueprint that directs and guides the robotic system to create precise and error-free layouts. The 2D CAD file not only defines the layout but also contains additional printing information and instructions to ensure it is robot-ready. It's the starting point for any successful construction site layout with HP SitePrint. However, preparing this CAD file can be complex and intricate, requiring expertise and precision.

At Pinnacle Infotech, we simplify this process by converting your 3D models or 2D CAD files into 2D DXF files, ensuring they are ready for the HP SitePrint robotic system. This preparation ensures quick and accurate on-site layout solutions, enhancing the efficiency of your construction projects.

## Sample of CAD preparation of a floor plan



Client's Input File



Output .dxf File

## Steps to Create/Update CAD files for HP SitePrint —

Enhance your HP SitePrint projects with our outsourced CAD services, designed to boost precision and efficiency. Our expert CAD team uses cutting-edge software and industry best practices to deliver high-accuracy CAD files tailored for HP SitePrint integration.

### 1. Advanced CAD File Preparation

Our process starts by understanding your project needs, consulting closely to gather all details. Using AutoCAD and Revit, we set up the drawing environment with exact units and scale for real-world accuracy.

### 2. Detailed Floor Plan Update

We update comprehensive floor plans, accurately depicting walls, boundaries, and structural elements. Every detail, including doors, windows, and columns, is reviewed and updated as per requirement.

### 3. Layer Management and Compliance

We ensure efficient HP SitePrint operation by organizing elements into appropriate layers, following HP SitePrint's naming conventions. This enhances file clarity, reduces errors, and ensures compatibility.

### 4. Precise Annotations and Markings

Our CAD files feature detailed annotations, dimensions, and site-specific notes. Key control points and reference locations are marked, ensuring accurate execution. Dimensions and labels for rooms and key features facilitate on-site reference.

### 5. Rigorous Verification and Cleanup

We verify and validate all measurements, ensure consistency, and remove unnecessary details, focusing on essential elements for a precise layout. Our cleanup process guarantees clear, accurate, and ready-to-use CAD files.

### 6. Seamless Export and Compatibility

CAD files are exported in required formats (DWG or DXF), ensuring compatibility with the latest HP SitePrint software. Our team stays updated with HP SitePrint specifications to prevent compatibility issues.

### 7. Detailed Documentation and Secure Backup

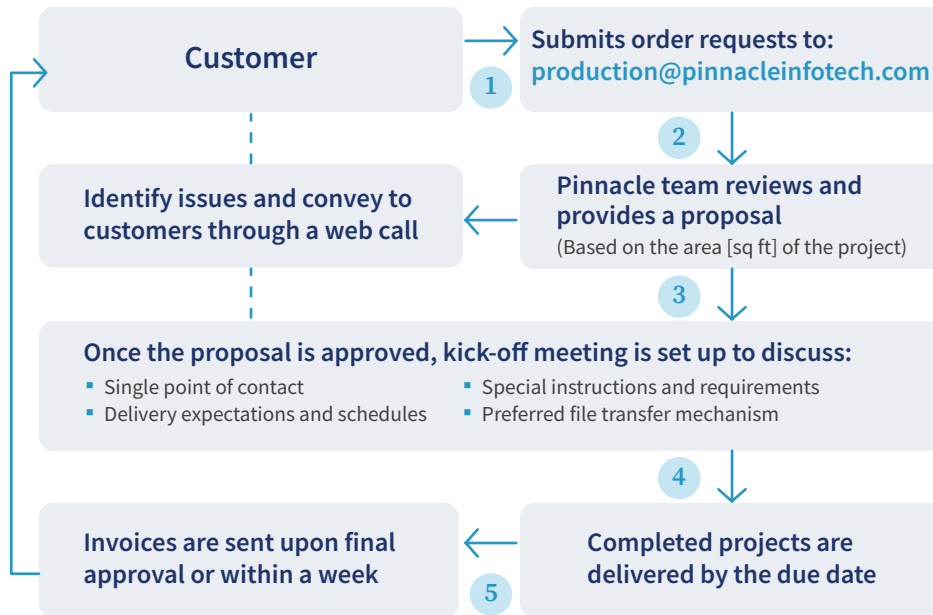
To maintain records we document the CAD file preparation process, including specific considerations and changes. All CAD files are securely backed up in multiple locations, ensuring data integrity and availability.



## 4. HP Negotiated – Special Introductory Pricing

Basic	Enhanced	Studio
<b>\$ 0.01</b> per SqFt	<b>\$ 0.015</b> per SqFt	<b>\$ 3200</b> per month/person
\$25 Flat Fees / Order	\$25 Flat Fees / Order	No Flat Fees
4 to 8 Working Days	2 to 5 Working Days	1 to 3 Working Days
First Available Team	Dedicated Team	Dedicated Team
PDF to CAD - Available	PDF to CAD - Available	PDF to CAD - Included
Revit Support - Available	Revit Support Included	Revit Support - Included
Revisions - Available	3 Revisions - Included	Revisions - Included

## 5. Order Process



## 6. FAQs

### Q. What type of CAD drawings are required for a robotic SitePrint layout solution?

The layout drawings must be in a 2D CAD file (.DXF), which can be generated from an existing 3D BIM Model. The 2D CAD file must include elements to be printed, known obstacles of the construction site (e.g., pillars, stair holes, perimeter), and control points or reference lines for Robotic Total Station positioning.

### Q. How and when will Pinnacle help during the project?

Pinnacle provides a detailed technical blueprint outlining the necessary parameters, configurations, and data formats for seamless integration with the HP SitePrint Robot. This structured framework ensures optimal execution of the workflow.

### Q. Can the Robot use the CAD file independently on the construction floor?

Yes, a 2D CAD file with necessary instructions allows the SitePrint Robot to accurately draw printable lines on the surface using different inks for various layout types.

### Q. How does the CAD file help the Robot identify obstacles?

The Robot uses pre-loaded CAD drawings to differentiate obstacles (e.g., columns, stairs, pillars) from printable lines, ensuring it avoids collisions and operates smoothly.

### Q. What are the key benefits of using the robotic SitePrint layout?

Automated layout creation using the SitePrint technology eliminates manual labor costs, ensures nearly 100% accuracy by eliminating human error, and significantly shortens project completion times.

### Q. What is the estimated cost and turnaround time of a 50,000 sq ft building?

The estimated cost of a 50,000 sqft building is \$525 plus additional variable fees for PDF to CAD conversion, Revit support, and revisions.

Generally, it may take 4-8 working days to complete. However, looking at the project's execution timelines and priorities it may be reduced to less number of days.

## 7. Other Key Services We Offer

### 7.1 Pre-Bid Estimation

Pinnacle aids contractors with accurate pre-bid estimates, using digital tools for quick rate customization as per the project's requirement.

### 7.2 BIM Services

- Architectural Design
- Structural Analysis
- MEP Design Services
- Clash Coordination
- Construction Documentation
- Design Prefabrication/Spool Drawings
- Quantity Takeoff
- Laser Scan/Point Cloud Data
- BIM Template and Content Creation
- BIM IT Infrastructure Planning
- Energy Optimization
- 3D Modeling
- Constructability Review
- Construction Site Logistics
- 4D/5D Construction Simulation
- Marketing Presentation

### 7.3 BIM Consulting Services

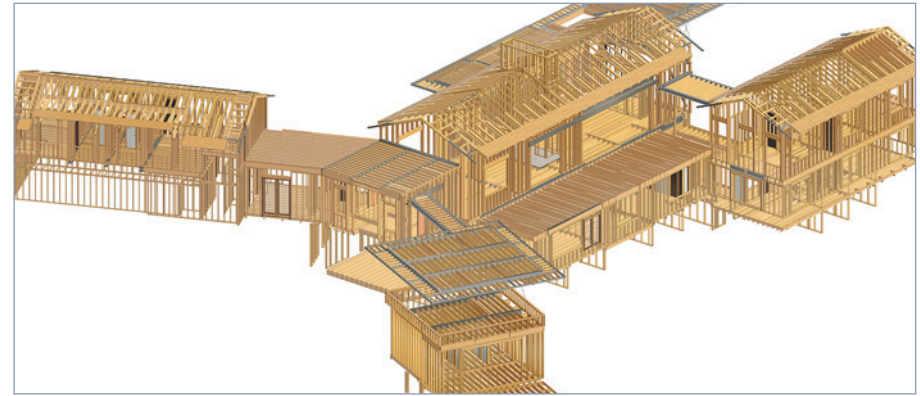
Our BIM Consulting Services offer BIM Strategy Planning, Implementation, Execution Plans, Training, and Value Engineering to ensure project success.

### 7.4 Digital Twin & Facilities Management

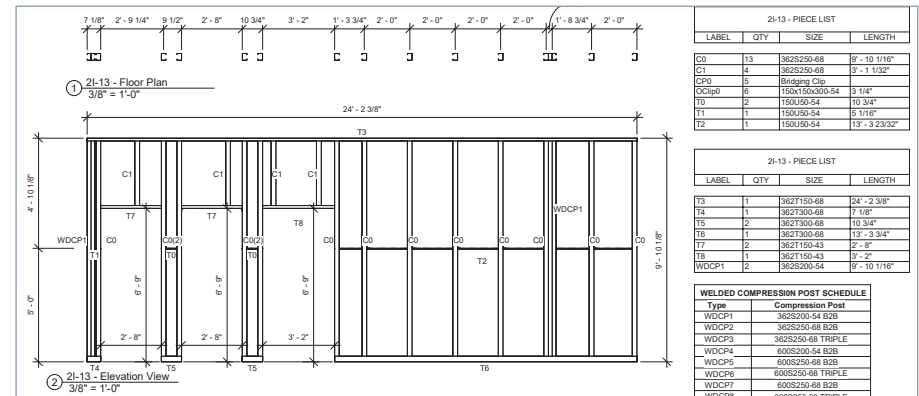
Pinnacle's BIM-centric Facility Management leverages COBie to deliver centralized and precise project design and asset data, enhancing maintenance efficiency. By creating intelligent BIM-based Digital Twins, Pinnacle provides dynamic replicas of physical assets. These replication models enable data-driven facility management throughout the construction lifecycle and in the maintenance and operation of facilities post-construction.



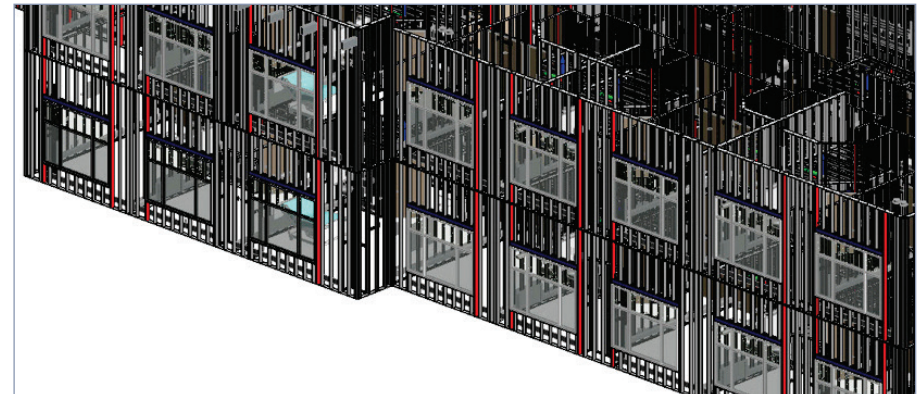
Scan to explore  
our services



Wood Structure



Shop Drawing – Wall Panel



Colour Coding for Critical Stud Elements

## 8. Why Pinnacle

Each of our employees has ingrained in themselves the core values - 'EARTH' of our organization.



Excellence



Agility



Reliability



Teamwork



Honesty

### Excellence

Excellence is a way of life for us. Our commitment to hard work, creativity, and innovation allows us to reach our full potential in approach, operations, and collaborations. We foster a culture of excellence from the ground up within our organization to achieve operation at the highest industry standards.

### Agility

We understand that every business is different. We are highly agile and can adjust quickly to changing market conditions and client requirements. In addition, we offer a variety of business models to suit your specific needs at competitive prices.

### Reliability

Pinnacle relies on trusted processes to consistently produce excellent results. We have over 30 years of experience in the AEC industry, and our work processes are ISO-certified.

### Teamwork

We work together to scale every challenge. We understand that it is only through teamwork that we can provide the best possible results for our customers. Pinnacle fosters a team-oriented culture where everyone is valued, and their contributions are encouraged and recognized.

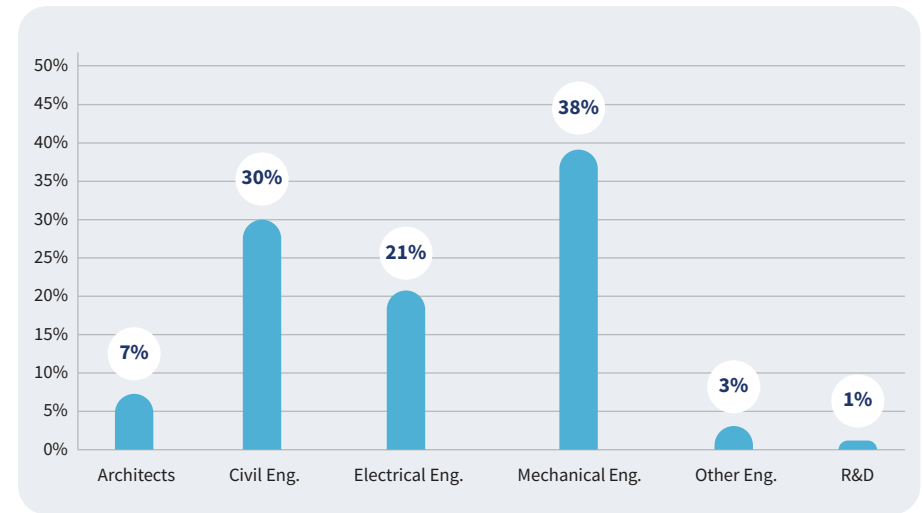
### Honesty

Honesty is our key value, and we hold ourselves to the highest standards of integrity. We strive to be transparent and clear in our communication to ensure that our clients get the best value for the money.

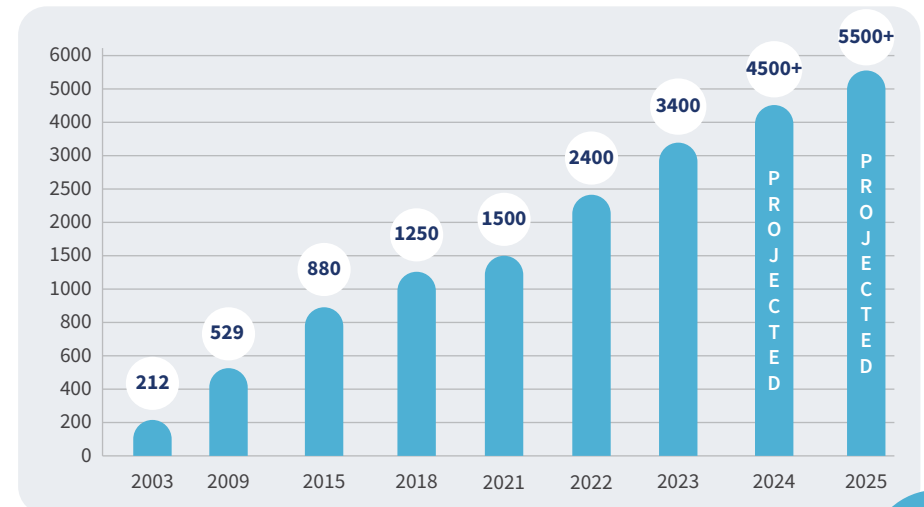
## 9. Our Team

Pinnacle's significant contribution to Building Information Modeling is made possible by its highly qualified and experienced workforce, including engineers, architects, and other experienced professionals. All our employees are well-versed in handling international construction codes and standards. We are proud of the diverse team and their global experience.

### Employee Background



### Workforce Growth





## 10. Our Infrastructure

Pinnacle has large state-of-art campuses in Durgapur, Jaipur, Kolkata & Madurai, comprising facilities like High-speed Bandwidth, Blade servers, an R&D center, a Datacenter, recreational zones, playgrounds, and more.

We also have equipped global delivery centers in the US (Houston, Atlanta, and San Jose), Canada (Toronto), UK (London), UAE (Dubai), Singapore, Germany (Munich), and Japan (Tokyo) that allow our employees to work in the same time zone as our customers.

Pinnacle's Construct-ability Installation Lab gives construction site experience to employees, integrating theoretical learning with practical experience. It enables our employees to deliver BIM solutions on time and with accuracy.



## 11. Our Work Processes

We strongly emphasize the significance of efficient work process management and consistent communication in the context of outsourcing services. Our process orientation and quality control are per ISO standards – 9001:2015, 27001:2013, 19650-2, 19650-3, and 19650-5, plus EMS 14001:2015. As holders of **ISO 19650-5**, the esteemed international certification for BIM services, we ensure adept data management and transparent collaboration. On orders, we assign a dedicated Relationship Manager, a competent Project Delivery Head, and Project Managers for focused execution.

### *Relationship Management*

Our relationship managers are co-located with customers, ensuring clear communication, managing timelines, and handling deliveries promptly to surpass customer expectations. They advise customers on the services Pinnacle provides and build long-term business relationships.

### *Production Process*

Project teams report to Project Delivery Head (PDH). The PDH provides technical leadership to the team and ensures standard work processes (as per ISO norms) are followed. They oversee project delivery. Project Delivery Heads periodically communicate with the client to get regular feedback and ensure the successful completion of the project.

Project Managers handle small teams for a customer and are responsible for understanding project requirements, project standards, invoicing processes, and communication protocols. They prepare project templates per project specifications, plan resources and align project delivery schedules.

### *Auditing Process*

The COE team is an independent body in the company for Process and quality management and monitors the process and quality through various audit parameters, sets up feedback management processes, carries out investigations in case of any complaints/concerns, and provides action items. This way, Pinnacle ensures consistency in the final deliverables throughout the company.

### *Quality Control Process*

Pinnacle's efficient processes and stringent quality control mechanisms have added certainty to 15000+ projects worldwide. Our process orientation and quality control are per ISO 9001:2015, ISO/IEC 27001:2013, ISO 19650-2, ISO 19650-3, and **ISO 19650-5** standards and are managed by an independent QC team.

## 12. Awards & Recognition

Pinnacle has won accolades in the form of numerous awards and recognition from the Government, Industry, and prestigious national and international associations.



## 13. Our Specialized Solutions

Beyond our core services, we also offer enhanced solutions for empowering your business. These solutions include:

### PiVDC

Homegrown plugins for Revit and Navisworks to automate repetitive tasks, boosting productivity.

### Client Desk

Our 'Glass Kitchen' for your projects that enables real-time progress tracking.

### Autodesk Reseller

Personalized support and expertise on Autodesk products.

### Autodesk Training Center

Autodesk-certified courses to help your organization or academic institute tap into the next level of Autodesk learning.

### Autodesk Academic Partner

Brilliant training facility, friendly processes for professionals and students, powered by top instructors delivering Autodesk excellence!

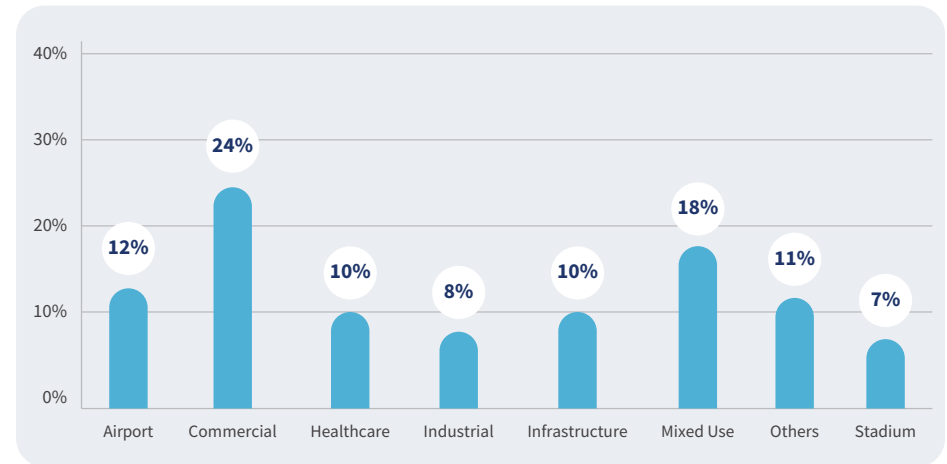


Authorised Training Centre  
Authorised Academic Partner

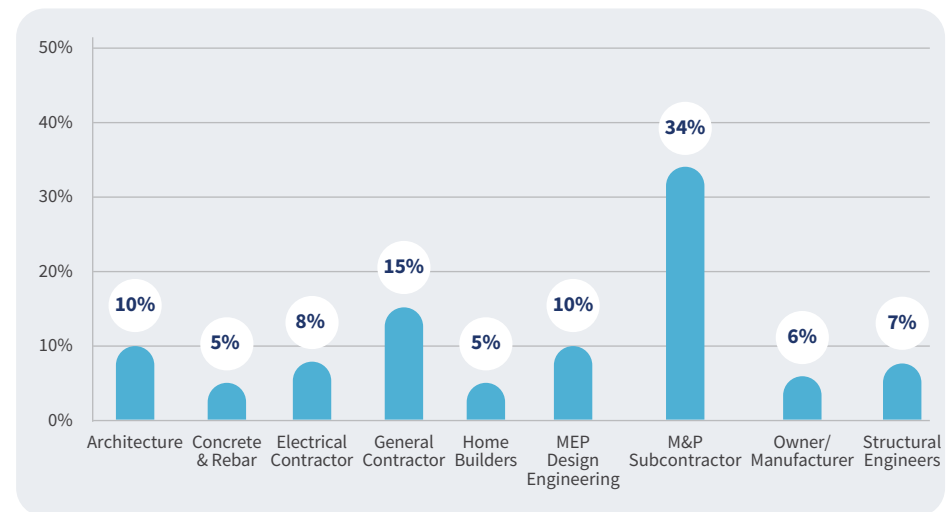
## 14. Our Projects

We have successfully executed 15000+ BIM projects for our clients in 43 countries across the world. Our portfolio of projects for our 2000+ customers includes Airports, Manufacturing Units, Data Centres, Hospitals, Stadiums, High-Rise Towers, and more.

Project Statistics - Industry Sectors



Project Statistics - Segment Wise



## Key Projects

### Dubai International Airport

Dubai, UAE



### ASHRAE Global HQ

Atlanta, USA



### St. Mary Magdalene C of E School

Northampton, UK



*Glimpses of our projects encompassing diverse solutions we have offered*

## 15. Clients Speak

“Pinnacle Infotech is a valuable business partner in delivering an iconic world-class Project. The most important aspect of having Pinnacle on board is the instrumental role in overcoming challenges by providing satisfying solutions.”

### HBK Contracting Company, Qatar

*Leonidas Tzevelekas*

“This was a very large project with 5 jobs at the same time. The schedule was aggressive, with lots of DRBs and RFIs to incorporate. Pinnacle did a great job being organized and hit our deadlines almost 100% of the time.”

### Hoffman Structures, USA

*Garnette Rouse*

“It has been very good to work with the Pinnacle team. The team we work with works very hard & always gives 100%.”

### Black & McDonald, Canada

*Tony Marchione*

“Nearly 15% of project costs were reduced as Pinnacle had validated the layout with the shortest path according to the MEP service reduction based on international codes. Pinnacle did an excellent job of deputing a large experienced team of BIM Engineering professionals.”

### Jeddah Tower, KSA

*Ziad Aboul Hosn*

“Pinnacle Team was incredible. There were some challenges on our job, and Pinnacle made our lives easier by working alongside our site team seamlessly.”

### Modern Niagara, Canada

*Chris Gour*

“The Pinnacle team can thoroughly review and analyze the drawing set and quickly respond with succinct questions needed to complete the task. Their responsiveness is assuring, and the quality and completeness of work are consistent with what our firm expects of all its employees.”

### NSPJ Architects, USA

*Cade Brummer*

## India Office Locations

### Durgapur - HQ

Pinnacle Infotech Solutions  
Bidhannagar, Durgapur, WB 713212  
Phone: +91 343 6602222  
Fax: +91 343 6602230  
Email: info@pinnacleinfotech.com

### Madurai

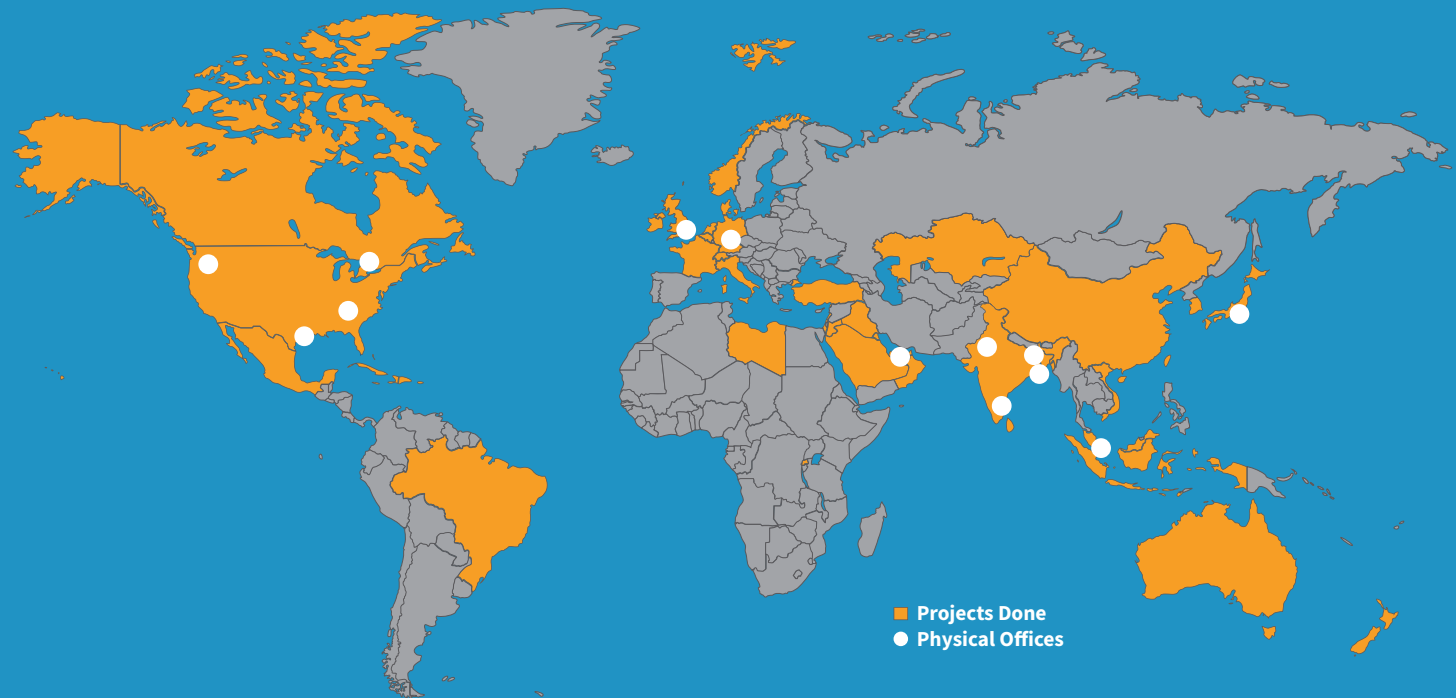
Pinnacle Infotech Solutions  
Elcot IT Park, Plot No - 5,6,&7, Vadapalanji,  
Madurai, Tamil Nadu, India - 625021  
Phone: +91 70100 97363

### Jaipur

Pinnacle Infotech Solutions  
Mahindra SEZ, Jaipur, RJ 302037  
Phone: +91 141 722444

### Kolkata

Pinnacle Infotech Solutions  
Ecospace Business Park, Kolkata 700156  
Phone: +91 33 2324 5900



## International Office Locations

### USA - Houston

Pinnacle Infotech Inc.  
50 Sugar Creek Blvd,  
Sugar Land, TX 77478  
Mr. Biswanath Todi  
Phone: +1 713 780 2135  
Email: btodi@pinnacleinfotech.com

### USA - Atlanta

Pinnacle Infotech Inc.  
6065 Roswell Rd NE #625,  
Atlanta, GA 30328  
Mr. Mickey Cantrell  
Phone: +1 270 223 6319  
Email: mcantrell@pinnacleinfotech.com

### USA - San Jose

Pinnacle Infotech Inc.  
25, N 14<sup>th</sup> Street, Suite #670  
San Jose, CA 95112  
Mr. Jash Hirani  
Phone: +1 832 874 2798  
Email: jhirani@pinnacleinfotech.com

### Canada

Pinnacle VDC Inc.  
3250 Bloor Street West, East Tower,  
Suite 600, Toronto, ON M8X2X9, Canada  
Mr. Cory Houle  
Phone: +1 613 290 7477  
Email: choule@pinnacleinfotech.com

### UK

Pinnacle Infotech Limited  
The Barley Mow Centre,  
London, W4 4PH  
Mr. Pat Saha  
Phone: +44 79600 26070  
Email: psaha@pinnacleinfotech.com

### Germany

Pinnacle BIM Technology GmbH  
Lilienthalstrasse 27, 85399 Hallbergmoos,  
Munich, Germany  
Mr. Arijit Sen  
Phone: +49 162 5111 463  
Email: arijits@pinnacleinfotech.com

### UAE

Pinnacle Infotech Technologies FZ-LLC  
Office No – 307, 3rd Floor, Building No. 7  
Dubai Outsource Zone, Dubai, UAE  
Mr. Yash Goyal  
Phone: +971 52 769 7465  
Email: dubai@pinnacleinfotech.com

### Singapore

Pinnacle BIM Technology PTE. LTD.  
BCA Braddell Campus, 200 Braddell Road,  
#13-63, Singapore 579700  
Mr. Kuntal Chakraborty  
Phone: +65 69508205  
Email: kchakraborty@pinnacleinfotech.com

### Japan

Pinnacle BIM Technology K.K.  
#403 7-1-5, Minamiaoyama, Minato-ku,  
Tokyo, Japan, 107-0062  
Mr. So Adachi  
Phone: +81 80 3008 9453  
Email: sadachi@pinnacleinfotech.com

